



QUARTERLY MEETING

20 February, 2013

BOOKLET THREE

**School Admission Arrangements 2014-2015
Appendix 5A – 5I**

ADMISSIONS POLICY FOR COMMUNITY AND VOLUNTARY CONTROLLED SCHOOLS FOR THE ACADEMIC YEAR 2014/15

All governing bodies are required by section 324 of the Education Act 1996 to admit to the school a child with a statement of special needs that names the school. This is not an oversubscription criterion. This relates only to children who have undergone statutory assessment and for whom a final statement of special educational needs (SEN) has been issued.

If the number of applications exceeds the Published Admission Number (PAN), after the admission of children where the school is named in the statement of special educational needs (SEN) the following oversubscription criteria will apply:

ORDER OF PRIORITY:	Notes:
<u>Priority Group 1:</u>	
Children and young people in Public Care for whom the school has been expressed as a preference and previously looked after children, that is children who were adopted (or subject to residence orders or special guardianship orders) immediately following having been looked after.	<i>This applies to all looked-after children, including those who are in the care of another local authority.</i> <i>In the case of previously looked after children, a copy of the relevant documentation will be required in support of the application.</i>
<u>Priority Group 2:</u>	
Children the Authority believes have special social or medical reasons for admission.	<i>We will only consider applications on social or medical grounds if they are supported by a professional recommendation from a doctor, social worker, or other appropriate professional. The supporting evidence should set out the particular social or medical reason(s) why the school in question is the most suitable school and the difficulties that would be caused if the child had to attend another school.</i> <i>Panels of professionally qualified people will consider all applications made under priority group 2.</i>
<u>Priority Group 3:</u>	
Children living within the normal area of the school.	
<u>Priority Group 4:</u>	
Children living outside the normal area of the school.	

Children in higher numbered priority groups will be offered places ahead of those in lower numbered priority groups. All applications within each priority group will be considered equally (i.e. all applications, regardless of order of preference).

Tie break:

If there are not enough places for all the children in one of these priority groups, we will give priority first to those with a sibling at the school in September 2014 (in all cases sibling refers to brother or sister, half brother or sister, adopted brother or sister, step brother or sister, or the child of the parent / carer's partner where the child for whom the school place is sought is living in the same family unit at the same address as that sibling) and then to those living nearest the school.

If within a priority group there are not enough places for all those with a sibling at the school in September 2014, we will give priority to those children with a sibling living nearest the school.

All distance measurements are based on the nearest route recognised by the County Councils electronic mapping system from a child's home address to school. The measurement is made from a fixed point within the dwelling, as identified by Ordnance Survey, to the nearest school entrance using footpaths and roads. The routes measured to determine the allocation of school places will be those recognised by the electronic mapping system used by the school admissions team.

We may be able to meet your preference for a place at a school that does not serve the local area you live in. In this case, you will normally be responsible for travel arrangements and the costs of your child's travel to and from school.

Local arrangements:

Scarborough area - Graham School - For priority group 3 applications (that is, children living within the normal area covering the school), priority will be given as follows:

- a) Children living in the area normally served by East Ayton Community Primary School and the area west of Scalby Road from Lady Edith's Drive to Scalby Beck.
- b) Children who will have an older sibling at the school of their choice.
- c) Children who live nearest to the school of their choice.

Scalby School - For priority group 4 applications (that is, children living outside the normal area of the school), priority will be given to children who live in the areas normally served by East Ayton Community Primary School and the area west of Scalby Road from Lady Edith's Drive to Scalby Beck and who:

- a) will have an older sibling at Scalby School at the start of the term when the younger sibling starts school; or
- b) would have to make the longest journey to another school without them becoming eligible for help with travel costs from us under the local authority transport policy.

Selby area - Brayton College and Selby High School – For the purposes of admissions for priority group 3 children a distinction is drawn between those who live in Selby rural area and Selby town area. Each school, Brayton College and Selby High, has its own designated rural area and the two schools are jointly the normal schools for the Selby town area. Places will be offered, within priority group 3, to children from the individual rural area associated with each school before those in the town area, using the tie break elements of the Admissions policy for community and voluntary controlled schools for the academic year 2014/15 where necessary.

Ripon Grammar School - Ripon Grammar School is a designated grammar school,¹ this means that the school is permitted to select its entire intake on the basis of high academic ability². The school does not have to fill all of its places if applicants have not reached the required standard. Ripon Grammar School offers 103 day places and 14 boarding places.

As a maintained boarding school Ripon Grammar School may take boarders as well as day pupils. Maintained boarding schools can set separate admission numbers for day places and boarding places. A maintained boarding school can interview applicants to assess suitability for boarding, but such interviews **must** only consider whether a child presents a serious health and safety hazard to other boarders or whether they would be able to cope with and benefit from a boarding environment. To help with this assessment, they may also use a supplementary information form, and information provided by the previous school and by the child's home local authority (on safeguarding issues).

¹ As designated by the Education (Grammar School Designation) Order 1998 (SI 1998/2219). Where a designated Grammar School converts to become an Academy, the Academy is permitted to continue selecting their entire intake: Section 6(3) of the Academies Act 2010.

² Section 104 of the School Standards and Framework Act

Boarding schools **must** give priority in their oversubscription criteria in the following order:

- a. looked after children and previously looked after children;
- b. children of members of the UK Armed Forces who qualify for Ministry of Defence financial assistance with the cost of boarding school fees;
- c. children with a 'boarding need', defined by Ripon Grammar School as follows:
 - i. Children at risk or with an unstable home environment and children of service personnel who have died while serving or who have been discharged as a result of attributable injury;
or
 - ii. Children of key workers and Crown Servants working abroad, e.g. the children of charity workers, people working for voluntary service organisations, the diplomatic service or the European Union, teachers, law enforcement officers and medical staff working abroad whose work dictates that they spend much of the year overseas.

**ADMISSIONS POLICY FOR COMMUNITY AND VOLUNTARY CONTROLLED
NURSERY SCHOOLS, NURSERY CLASSES AND PRE-RECEPTION
CLASSES FOR THE ACADEMIC YEAR 2014/15**

All governing bodies are required to admit to the school a child with a statement of special needs that names the school. This is not an oversubscription criterion. This relates only to children who have undergone statutory assessment and for whom a final statement of special educational needs (SEN) has been issued.

ORDER OF PRIORITY:	<i>Notes</i>
<p><u>First priority:</u></p> <p>Children and young people in Public Care for whom the school has been expressed as a preference and previously looked after children, that is children who were adopted (or subject to residence orders or special guardianship orders) immediately following having been looked after.</p>	<p><i>This applies to all looked-after children, including those who are in the care of another local authority.</i></p> <p><i>In the case of previously looked after children, a copy of the relevant documentation will be required in support of the application.</i></p>
<p><u>Second priority:</u></p> <p>Children who are recommended by the Director of Children and Young Peoples Service, including children in the care of a local authority, or by the appropriate designated medical officer.</p>	<p><i>Note: we will only consider applications in this category if they are supported by a recommendation from a doctor, social worker or other appropriate professional which sets out the particular reason(s) why the school in question is the most suitable school and the difficulties that would be caused if the child had to attend another school.</i></p>
<p><u>Third priority:</u></p> <p>Children from homes with poor housing conditions or overcrowding, or from a background which could affect the child's normal educational development.</p>	<p><i>Note: this should be supported by the recommendation of a doctor, social worker or other appropriate professional.</i></p>
<p><u>Fourth priority:</u></p> <p>Children within the normal area of the school, giving priority to the oldest children first.</p>	
<p><u>Fifth priority:</u></p> <p>Children from outside the school's normal area, giving priority to those whose home is nearest to school first.</p>	

**2014/15
CO-ORDINATED ADMISSION
ARRANGEMENTS**

Introduction

The aim of the North Yorkshire Coordinated Primary and Secondary School Admissions Scheme is to provide an open and fair way for considering parental preferences for admission to schools. Our scheme complies with current legislation relating to school admissions and with advice contained in the Department for Education 2012 School Admissions Code.

The scheme is reviewed annually and is designed to ensure that every child living in North Yorkshire, who is due to start at a North Yorkshire primary school, or transfer to junior or secondary school is offered a single school place on the same day. It aims to ensure that each parental preference is considered equally and parents receive a school place in accordance with their highest ranked preference which is available. This scheme applies to admissions in the normal round but not those that take place in-year. In-year admissions are those made during the academic year and applications for admission to age groups other than the normal year of entry.

North Yorkshire Local Authority will work with Community, Voluntary Controlled, Voluntary Aided, Foundation, Trust primary and secondary schools and Academies within North Yorkshire, to ensure the co-ordinated scheme operates as smoothly as possible for parents and we will work closely with our thirteen neighbouring authorities to ensure admission arrangements are co-ordinated. Our 13 neighbouring admission authorities, Voluntary Aided, Foundation, Trust schools and Academies are listed at Appendix 3 and Appendix 4.

After consideration of all parental preferences for all schools with reference to the order in which these are ranked, the Local Authority will notify parents living within North Yorkshire of the offer of one school place on behalf of all admission authorities operating within the co-ordinated admissions scheme.

The detailed arrangements and timetable for co-ordinating school admission with the separate arrangements for secondary and primary schools can be found at Appendices 1 and 2.

Arrangements for In Year admissions can be found at page 21 of this co-ordination document. This document is also available on our website at www.northyorks.gov.uk/admissions

The website and the Primary and Secondary Guides for Parents include information about:

- The operation of our admissions schemes for all North Yorkshire Community and Voluntary Controlled schools;
- The timescales and timetable for each admission process;

- Information about the number of allocations made at each school in the previous academic year;
- Information about the number of schools that were oversubscribed resulting in parental appeals and the numbers and outcome of these appeals. This information about allocations and appeals should help parents to assess realistically their likelihood of obtaining a place at their preferred schools.

Co-ordination

1. The scheme does not affect the duty of the governing bodies of Academies, Voluntary Aided, Foundation and Trust schools to determine their own admissions policies.
2. The scheme does not apply to a looked after child, a previously looked after child or a child with a statement of Special Educational Needs naming the school in question.
3. We will receive information of children expressing preferences for our Community, Voluntary Controlled, Voluntary Aided, Foundation and Trust Schools and Academies from neighbouring Local Authorities, which we will process as part of our co-ordinated arrangements along with those for North Yorkshire children.
4. Parents requesting literature on Voluntary Aided, Foundation, Trust schools or Academies or non-North Yorkshire schools will be referred to the appropriate school or admissions authority. Where non-North Yorkshire parents complete our form in error we will forward it to their home authority.
5. We will receive complete ranked lists of all preferences from North Yorkshire Voluntary Aided, Foundation, Trust schools and Academies as well as lists from neighbouring Local Authorities of children to whom they can offer places. We will produce lists of children to whom we can offer places at our Community and Voluntary Controlled Schools. We will inform our neighbouring Local Authorities which of their children can and cannot be offered places at any of our schools.
6. Having received information from other admissions authorities we will allocate places to children living in our area according to the highest ranked preference for which a place may be available.
7. Where we cannot meet any of the parental preferences expressed for a North Yorkshire child we will allocate a place at an alternative school with places available. This may or may not be the local school.
8. Supplementary Information Forms may need to be completed by parents applying for Voluntary Aided primary or secondary schools.

Admissions Co-ordination 2014/15

Secondary

North Yorkshire's co-ordinated admissions scheme applies to 5 Voluntary Aided Secondary Schools, 30 Community Secondary schools, 8 Academies and 1 Trust Secondary School.

Primary

1 Foundation Primary, 1 Academy, 49 Voluntary Aided Primary Schools and 269 Voluntary Controlled and Community Primary Schools, 5 Diocesan Authorities and 13 Neighbouring Authorities.

On line applications for school places can be made by logging on to our website at www.northyorks.gov.uk/primaryadmissions or www.northyorks.gov.uk/secondaryadmissions.

Applying for a Primary, Infant, Junior or Secondary School Place

9. Parents can list up to 5 schools in order of preference.
10. Parents may want to include their local school as one of their preferences because if we are unable to meet a higher preference and their normal area school is oversubscribed, we will give children a place at the nearest school with places available which may be some distance from their home.
11. If parents name a school other than their normal area school, they will normally be responsible for transport.

Late Applications

12. Any Common Application Form for school places received after the closing date of 31 October 2013 for secondary schools and 15 January 2014 for primary schools will be considered as a late application unless a reason has been provided that is acceptable to us as the admission authority. Late applications whose reasons have been agreed will be considered along with applications received on time.
13. Applications received after 1 March 2014 for secondary schools or 16 April 2014 for primary schools will be co-ordinated using the same

arrangements and criteria as previous applications. The offer of a school place will be made in accordance with our agreed and published scheme. If none of a parents' preferences can be met, the local or nearest school with a place available will be offered and appeals information provided to parents as necessary.

The Offer of a Place

14. No places will be held in reserve for any school.
15. We will write to all parents of North Yorkshire children on 1 March 2014 for Secondary Schools and on the 16th April 2014 for Primary, Infant and Junior Schools, notifying them of the single school place allocated to their child or children.
16. The place offered could be at one of our Community or Voluntary Controlled schools, Voluntary Aided, Foundation, Trust schools or Academies within North Yorkshire or a school in an area served by another Local Authority.

Appeals

17. Where we have been unable to offer a school place listed as a higher preference, parents will be offered the statutory right of appeal against the decision.
18. In such circumstances the offer letter will give the reasons why we have been unable to allocate their other stated preferences. Where the statutory right of appeal is the responsibility of North Yorkshire Local Authority we will inform the parents where the appeal forms can be located on the NYCC website.
19. Where the responsibility is that of another admissions authority, we will advise parents to contact them to confirm appeal arrangements.
20. Parents who have been refused a place at a North Yorkshire school by their home authority will be informed that they should contact us to discuss the appeals process.
21. The outcome of successful admission appeals will lead to further modifications to the original allocation. These changes must again be communicated to other admission authorities (and theirs to us) to enable all authorities to make final adjustments to the allocation.
22. Once appeals have been completed we will communicate with all the schools within our boundary to ensure that they have a correct and up-to-date allocation list.

Waiting Lists

23. A waiting list will be maintained for all oversubscribed Community, Voluntary Controlled, Voluntary Aided, Foundation, Trust Schools and Academies until 31 December 2014.
24. The Local Authority requires the governing body of each, Voluntary Aided, Foundation, Trust School and Academy to update us when places become available unless the Local Authority are maintaining the schools waiting list on their behalf. The co-ordination regulations require that any offer of a school place must always be made by the Local Authority.
25. Where places become available they will be allocated from the waiting list in accordance with the published oversubscription criteria.
26. Where we are able to offer a place to a non-North Yorkshire child from the waiting list we will liaise with their home authority.

Secondary Transfer Scheme 2014/15

27. The secondary scheme enables parents living within North Yorkshire whose children are transferring to secondary school to complete a single application either on-line or in paper form listing up to five preferences for admission to any secondary schools, giving reasons for their preferences both within North Yorkshire and neighbouring Local Authority areas.
28. In June 2013 parents of Year 5 children who will be Year 7 in September 2014 will be informed by letter via their child's primary school that they will need to apply on line for a school place. They can express up to 5 preferences for admission to Community, Voluntary Controlled, Voluntary Aided, Foundation, Trust schools and Academies.
29. Parents without internet access will be informed that they will need to contact the admissions team for a paper copy of the common application form to enable them to apply for a school place for their child.
30. Parents will be informed that supplementary information may also be requested by Voluntary Aided or non-North Yorkshire schools, in order for the school to apply their oversubscription criteria.
31. Common application forms will be required for all transfers at Year 7 as well as transfers to schools who admit children in Year 10.

32. Parents must return their applications by the closing date of 31 October 2013. Every effort is made by the admissions team to ensure that applications are received by the closing date.
33. Parents will not be allowed to change their preferences after 31 October 2013 without a reason that is acceptable to us as the admissions authority. Learning that the child is suitable or not suitable for a selective school will not be considered as an acceptable reason for a change of preference.
34. Parents who wish their children to attend independent schools will be encouraged to tell us. However independent schools are not included in the co-ordinated arrangements. These parents may also wish to apply for a place at a North Yorkshire school.
35. If parents living outside of North Yorkshire enquire about our schools they will be directed to the North Yorkshire County Council website. Parents will be advised to complete a common application form for their home authority.
36. On the common application form parents will need to provide their child's name and residential address. The address provided must be where the child lives permanently. If residency is split between two parents, the address used must be the address of the parent who receives the Child Benefit.
37. The offer of a single school place will be made on 1 March 2014 and allocation letters will be posted to parents/carers on that date.
38. We will offer a place at a North Yorkshire school even if parents have not completed a common application form because we have a duty to ensure a school place is available for every North Yorkshire child.
39. Parents who do not wish to accept a place at a school offered to them must notify the admission authority within 10 working days of the offer being made.
40. The timetable for secondary school admissions is attached as Appendix 1 of the Co-ordinated Admissions Arrangements, Secondary Transfer 2014/15.

Selection

41. There are 3 selective grammar schools within North Yorkshire; one of which is a Voluntary Aided boys' school, one a mixed co-educational school and one a girls' school which has Academy Trust status. In addition there are 3 non selective schools in the selective areas of the County.

42. If a child is entered for selection testing, parents must make sure they name the selective school they would like them to go to on the common application form.

Skipton Selection

43. Places will normally be provided at Ermysted's Grammar School for boys who are deemed suitable for a grammar school education in accordance with the Local Authority's selection scheme and who live in the area served by the primary schools in Arncliffe, Beamsley, Bradley, Burnsall, Carleton, Cracoe, Embsay, Gargrave, Grassington, Kettlewell, Kirkby-in-Malhamdale, Skipton, Thornton-in-Craven and Threshfield. Ermysted's Grammar School is a selective grammar school that offers education to boys aged 11 to 18.
44. Skipton Girl's High School is a selective grammar school that offers education to girls aged 11 to 18 who are deemed suitable for a grammar school education in accordance with their selection scheme.
45. Aireville School and Upper Wharfedale School are non-selective secondary schools in a selective area offering education for children aged 11 to 16. Children can only be admitted to Skipton Girls' High School and Ermysted's Grammar School if they have been deemed suitable for a grammar school education. The local authority administers the published selection scheme for boys in the Skipton area.
46. All boys living and attending schools within the area served by the Ermysted's Grammar School will sit the selection tests unless their parents write or e-mail the admissions team stating that they do not want their child to be tested.
47. The governing bodies of Ermysted's Grammar School (Voluntary Aided) and Skipton Girls' High School (Academy Trust) are responsible for applying their own admissions policies and the Local Authority applies its published co-ordinated admissions arrangements on behalf of these schools.

Ripon Selection

48. Places will normally be provided at Outwood Academy Ripon and Ripon Grammar School for children who live in the City of Ripon together with the parishes of Aldfield, Azerley, Bishop Monkton, Bridge Hewick, Burton Leonard, Copt Hewick, Eavestone, Givendale, Grantley, Grewelthorpe, Hutton Conyers, Kirkby Malzeard, Laverton, Lindrick, with Studley Royal and Fountains, Littlethorpe, Markenfield Hall, Markington-with-Wallerthwaite, Newby-with-Mulwith, North Stanley with Sleningfird, Sawley, Sharow, Skelding, Skelton, Studley Roger and Winksley.

49. Outwood Academy Ripon is a non selective Academy in a selective area offering education for children aged 11 to 18. Ripon Grammar School is a selective grammar school that offers an education for children aged 11 to 18. Children can only be admitted to Ripon Grammar School if they have been deemed suitable for a grammar school education, in accordance with the local authority selection scheme. The local authority administers both the published selection scheme and the allocation of school places at Ripon Grammar School as it is a Community School. The Local Authority will apply its published co-ordinated admission arrangements on behalf of Outwood Academy Ripon.
50. All children living and attending schools within the area served by the Ripon schools will sit the selection tests, unless their parents write to or e-mail the admissions team that they do not want their child to be tested.

Selection tests

51. Tests for all forms of selection must be clear and objective and give an accurate reflection of the child's ability or aptitude, irrespective of sex, race or disability. It is for the admission authority to decide the content of the test, providing that the test is a true test of aptitude or ability.
52. The results of these selection tests are used to identify the highest scoring 28% or as close as possible of Year 6 children who live in the Ripon selective area and the highest scoring 28% or as close as possible of Year 6 boys who live in the Skipton selective area. This procedure sets the cut-off mark in each selective area and sets the standard which children in Ripon and boys in Skipton must reach, to be deemed suitable for grammar school education in their local selective area.
53. For us to consider children who live outside the selective area to be deemed suitable for a grammar school education at Ripon Grammar School or Ermysted's Grammar School, they must reach the cut-off mark which is set by the performance of the children who live in the selective area, as explained above.
54. There is no guarantee that children who either reach the cut off mark in the selection tests or have been successful at a selection review will be allocated a place at a Grammar School. If the school is oversubscribed with children who are deemed suitable for a Grammar School education places will be allocated using the published oversubscription criteria.
55. The Local Authority ensures that parents are aware that meeting the academic requirements for entry to Ripon Grammar School and Ermysted's Grammar School is not, in itself, a guarantee of a Grammar School place.

56. There is a non statutory selection review process available for parents whose children have not reached the cut off mark in the Local Authority's selection testing process. This is not a statutory process and does not replace a parent's formal right of appeal against refusal of a place.
57. If a child is refused a place at the school on 1 March 2014, which is the national offer date, parents will be offered their statutory right of appeal for a place at the school.
58. The School Admissions Code 2012 states that local authorities should take all reasonable steps to inform parents of the outcome of selection tests before the closing date for secondary applications on 31st October so as to allow parents time to make an informed choice of school, while making clear that this does not equate to a guarantee of a selective place.
59. The Local Authority must ensure that tests are accessible to children with special educational needs and disabilities, having regard to the reasonable adjustments for pupils with a disability required under equalities legislation.

Selection Testing 2014/15

60. Selection testing will take place during early September 2013 and the results of selection testing will be sent out to parents on 16 October 2013.

Primary Transfer Scheme 2014/15

61. The primary scheme enables parents living within North Yorkshire to complete a single application either on-line or in paper form listing up to five preferences for admission to any primary, infant or junior schools, giving reasons for their preferences both within North Yorkshire and neighbouring Local Authority areas.
62. Parents without internet access will be able to contact the Local Authority for a common application form to enable them to apply for a primary school place for their child.
63. If parents list a Voluntary Aided school as a preference the school may request supplementary information in order for them to apply their oversubscription criteria.
64. Parents must complete the common application forms by the deadline of 15 January 2014. Every effort is made by the admissions team to ensure that applications are received by the closing date.

65. Parents will not be allowed to change their preferences after 15 January 2014 without a reason that is acceptable to us as the admissions authority.
66. Parents who wish their children to attend independent schools will be encouraged to tell us. However independent schools are not included in the co-ordinated arrangements. These parents may also wish to apply for a place at a North Yorkshire school.
67. If parents living outside of North Yorkshire enquire about our schools they will be directed to the North Yorkshire County Council website. Parents will be advised to complete a common application form for their home authority.
68. On the common application form parents will need to provide their child's name and residential address. The address provided must be where the child lives permanently. If residency is split between two parents, the address used must be the address of the parent who receives the Child Benefit.
69. For primary school applications, all offers must be made on the 16 April 2014.
70. Parents who do not wish to accept a place at a school offered to them must notify the admission authority within 10 working days of the offer being made.
71. Appeals will usually be heard for first admission to schools in June and July of 2014.

Appendix 1

North Yorkshire Local Authority

Secondary, Community, Voluntary Controlled, Aided, Foundation, Trust Schools and Academies Timetable

Date	Activity
Mid June 2013	Parents informed by letter from the LA via child's primary school to apply on-line and details are provided. Parents without internet access to contact the LA for information.
16 August 2013	Closing date for withdrawal of children who are automatically entered for selection testing. Closing date for applications for children who are not automatically entered for selection.
6 September 2013	Familiarisation selection test in selective areas.
10 September 2013	First actual selection test for both in and out-of-area children.
13 September 2013	Second actual selection test for both in and out-of-area children.
16 October 2013	Results of selection testing posted to all parents.
31 October 2013	Closing date for return of Common Application Forms.
15 November 2013	Neighbouring Local Authorities to send us details of children in their area who have expressed preferences for schools in North Yorkshire. We send details of children expressing preferences for schools in other Local Authority areas to those authorities for consideration.
22 November 2013	Details of all children who have expressed preferences for North Yorkshire Academies, Voluntary Aided, Foundation and Trust schools to the schools for consideration.
6 January 2014	Non Statutory Reviews Commence
10 January 2014	Information to be returned to us by Voluntary Aided, Foundation and Trust schools on which places they can allocate.
17 January 2014	Send first round of allocation information to other authorities identifying potential offer(s).
24 January 2014	Confirmation of allocations with neighbouring admission authorities including Academies, Voluntary Aided, Foundation and Trust schools.
31 January 2014	Input information from first cycle of exchange of allocation information.
7 February 2014	Second allocation cycle preference information sent to other authorities
14 February 2014	Input allocation information from second cycle and send final allocation information to other authorities of school place offers to be made
17 February 2014	Input final allocation preference information and produce final allocation letters.
1 March 2014	Allocation Day. Send out allocation letters to all parents applying for a school place. Inform schools of final allocation.
15 April 2014 to 17 June 2014	Statutory admission appeals.
15 April 2014 to 26 August 2014	Manual adjustments to allocation and communicating those results to other authorities.
31 December 2014	Closure of waiting lists.

Appendix 2

North Yorkshire Local Authority

Primary for Aided, Community, Voluntary Controlled and Foundation Schools Timetable 2013/14

Date	Activity
September 2013	Primary Guide for Parent booklet and common application forms are available on the NYCC website for North Yorkshire parents. Parents without internet access to contact the LA for information.
15 January 2014	Closing date for the return of Common Application Forms.
22 January 2014	Neighbouring Local Authorities to send us details of children in their area who have expressed preferences for schools in North Yorkshire (depending on their timetables). We send details of children expressing preferences for schools in other Local Authority areas to those authorities for consideration.
24 January 2014	The education office send out details of all children who have expressed preferences for North Yorkshire Voluntary Aided, Academy, and Trust schools to the schools for consideration.
10 February 2014	Information to be returned to us by Voluntary Aided, Academy and Trust schools on which places they can allocate.
10 March 2014	Send first round of allocation information to other authorities identifying potential offer(s).
17 March 2014	Input information from first cycle of parental preferences.
24 March 2014	Send second allocation cycle information to other authorities
31 March 2014	Input preference information from second cycle and send final allocation information to other authorities.
16 April 2014	Send out allocation letters to all North Yorkshire parents. Inform schools of final allocations.
3 June 2014 to 17 July 2014	Statutory admission appeals.
3 June 2014 to 26 August 2014	Manual adjustments to allocation and communicating those results to other authorities.
31 December 2014	Closure of waiting list.

Appendix 3

Primary Academy and Trust Schools

Great Smeaton Community Primary School
GREAT SMEATON
Northallerton
DL6 2EQ
Tel No 01609 881349

Foundation School

Nun Monkton Foundation Primary School
The Green
NUN MONKTON
York
YO26 8ER
Tel No: 01423 330313

Primary Voluntary Aided Primary Schools

All Saints C of E Primary
School
Kirkby Overblow
HARROGATE
North Yorkshire
HG3 1HD
Tel No.01423 872491

All Saints RC Primary School
Green Lane East
THIRSK
North Yorkshire
YO7 1NB
Tel No. 01845 523058

Austwick C of E (VA) Primary
School
AUSTWICK
Lancaster
LA2 8BN
Tel No. 015242 51366

Barkston Ash Catholic Primary
School
London Road
Barkston Ash
TADCASTER
North Yorkshire
LS24 9PS
Tel No 01937 557373

St Mary's C of E Primary
School
Bolton-on-Swale
Scorton
RICHMOND
North Yorkshire
Tel No. 01748 818401

Burneston C of E (VA) Primary
School
BURNESTON
Bedale
North Yorkshire
DL8 6BP
Tel No. 01677 423183

Burnsall VA Primary School
BURNSALL
Skipton
North Yorkshire
BD23 6BP
Tel No. 01756 720273

Burnt Yates C of E Primary School
Burnt Yates
HARROGATE
North Yorkshire
HG3 3RW
Tel No. 01423 770586

Carleton Endowed School
Carleton
SKIPTON
North Yorkshire
BD23 3DE
Tel No. 01756 792910

Carlton and Faceby C of E VA
Primary School
CARLTON-IN-CELEVELAND
Middlesbrough
Cleveland TS9 7BB
Tel No. 01642 712340

Cawood C of E VA Primary
School
Broad Lane
CAWOOD
Selby
North Yorkshire
YO8 3SQ
Tel No. 01757 268368

Dacre Braithwaite Cof E Primary
School
SUMMERBRIDGE
Harrogate
North Yorkshire
HG3 4AN
Tel no. 01423 780285

Egton C of E VA Primary School
EGTON
Whitby
North Yorkshire
YO21 1UT
Tel No. 01947 895369

Farnley C of E VA Primary School
Farnley Lane
FARNLEY
Otley
West Yorkshire
LS21 2QJ
Tel No. 01943 463306

Horton in Ribblesdale C of E VA
Primary School
HORTON-IN-RIBBLESDALE
Settle
North Yorkshire
BD24 0EX
Tel No. 01729 860282

Ingleby Arncliffe C of E VA Primary
School
INGLEBY ARNCLIFFE
Northallerton
North Yorkshire
DL6 3NA
Tel No. 01609 882432

Kirkby in Malhamdale United VA
Primary School
KIRKBY MALHAM
Skipton
North Yorkshire
Tel No. 01729 830214

Kirkby & Great Broughton C of E VA
Primary School
KIRKBY-IN-CLEVELAND
Middlesbrough
TS9 7AL
Tel No. 01642 714707

Long Preston Endowed VA
Primary School
School Lane
LONG PRESTON
Skipton
North Yorkshire
BD23 4PN
Tel No. 01729 840377

Marton cum Grafton C of E VA
Primary School
Reas Lane
MARTON-CUM-GRAFTON
York
YO51 9QB
Tel No. 01423 322355

Masham C of E VA Primary School
1 Millgate
MASHAM
Ripon
North Yorkshire
HG4 4EG
Tel No. 01765 689200

Michael Syddall C of E (Aided)
Primary School
Mowbray Road
CATTERICK VILLAGE
Richmond
North Yorkshire
DL10 7LH
Tel No. 01748 818485

Middleham C of E Aided School
Park Lane
MIDDLEHAM
Leyburn
North Yorkshire
DL8 4QX
Tel No. 01969 623592

Rathmell C of E (VA) Primary School
Hesley Lane
RATHMELL
Settle
North Yorkshire
BD24 0LA
Tel No. 01729 840360

Richard Taylor C of E Primary School
Bilton Lane
HARROGATE
North Yorkshire
HG1 3DT
Tel No. 01423 563078

Richard Thornton's C of E (VA)
Primary School
BURTON IN LONSDALE
Via Carnforth
Lancashire
LA6 3JZ
Tel No. 015242 61414

Ripon Cathedral CE Primary School
Priest Lane
RIPON
North Yorkshire
HG4 1LT
Tel No. 01765 602355

Sacred Heart RC Primary School
Broomfield Avenue
NORTHALLERTON
North Yorkshire
DL7 8UL
Tel No. 01609 780971

St Benedict's RC Primary School
Back Lane
AMPLEFORTH
York
YO62 4DE
Tel No. 01439 788340

St George's RC Primary School
Overdale Road
Eastfield
SCARBOROUGH
North Yorkshire
YO11 3RE
Tel No. 01723 58353

St Hedda's RC Primary School
EGTON BRIDGE
Whitby
North Yorkshire
YO21 1UX
Tel No. 01947 895361

St Hilda's RC Primary School
Waterstead Lane
WHITBY
North Yorkshire
YO21 1PZ
Tel No. 01947 603901

St Joseph's Catholic Primary School
Colber lane
BISHOP THORNTON
Harrogate
North Yorkshire
HG3 3JR
Tel No. 01423 770083

St Joseph's Catholic Primary School
Coppice Rise
HARROGATE
North Yorkshire
HG1 2DP
Tel No. 01423 562650

St Joseph's Catholic Primary School
Swainsea Lane
PICKERING
North Yorkshire
YO18 8AR
Tel No. 01751 473102

St Joseph's Catholic Primary School
Station Road
TADCASTER
North Yorkshire
LS24 9JG
Tel No. 01937 832344

St Martin's C of E VA Primary School
Holbeck Hill
SCARBOROUGH
North Yorkshire
YO11 3BW
Tel No. 01723 360239

St Mary's Catholic Primary School
Tentergate Road
KNARESBOROUGH
North Yorkshire
HG5 9BG
Tel No. 01423 867038

St Mary's RC Primary School
Highfield Road
MALTON
North Yorkshire
YO17 7DB
Tel No. 01653 692274

St Mary's RC Primary School
Cross Lanes
RICHMOND
North Yorkshire
DL1 7DZ
Tel No. 01748 821124

St Mary's Catholic Primary School
Baffam lane
SELBY
North Yorkshire
YO8 9AX
Tel No. 01757 706616

St Peter's C of E VA Primary School
BRAFFERTON
Helperby
York
YO61 2PA
Tel No. 01423 360250

St Peter's RC Primary School
North Leas Avenue
SCARBOROUGH
North Yorkshire
YO12 6LX
Tel No. 01723 372720

St Robert's Catholic Primary School
Ainsty Road
HARROGATE
North Yorkshire
HG1 4AP
Tel No. 01423 504730

St Stephen's Catholic Primary School
Gargrave Road
SKIPTON
North Yorkshire
BD23 1PJ
Tel No. 01756 793787

St Wilfrid's Catholic Primary School
Church lane
RIPON
North Yorkshire
HG4 2ES
Tel No. 01765 603232

Swainby and Potto C of E VA Primary School
Claver Close
SWAINBY
Northallerton
North Yorkshire
DL6 3DH
Tel No. 01642 700518

Terrington C of E VA Primary School
TERRINGTON
York
YO60 6NS
Tel No. 01653 6483340

The Boyle & Petyt Primary School
Harrogate Road
BEAMSLEY
Skipton
North Yorkshire
BD23 6HE
Tel No. 01756 710378

Appendix 4

Our thirteen neighbouring admission authorities, Voluntary Aided, Academies, Foundation and Trust secondary schools are listed below:

Academies/ Trust Secondary Schools:

Skipton Girls' High School
Gargrave Road
Skipton
North Yorkshire
BD23 1QL
Tel No. 01756 707600

South Craven School
The Technology & Engineering College
Holme Lane
Cross Hills
Keighley
West Yorkshire
BD20 7RL
Tel No. 01535 632861

St Aidan's C of E High School
Oatlands Drive
HARROGATE
North Yorkshire
HG2 8JR
Tel No. 01423 885814

Norton College
Langton Road
Norton
Malton
YO17 9PT
Tel No. 01653 693296

Rossett School
Green Lane
Harrogate
HG2 9JP
Tel No. 01423 564444

Harrogate Grammar School
Arthurs Avenue
Harrogate
HG2 0DZ
Tel No. 01423 531127

Harrogate High School
Ainsty Road
Harrogate
HG1 4AP
Tel No. 01423 548800

Outwood Academy Ripon
Clotherholme Road
Ripon
HG4 2DE
Tel No. 01765 604564

George Pindar Community Sports College
Eastfield,
Scarborough
YO11 3LX
Tel No. 01723 582194

Voluntary Aided Secondary Schools

Holy Family Catholic High School
Longhedge Lane,
CARLTON
Goole
East Yorkshire
DN14 9NS
Tel No. 01405 860276

St Augustine's RC School
Sandybed Lane
Off Stepney Hill
Scarborough
North Yorkshire
YO12 5LH
Tel No. 01723 363280

St Francis Xavier School
Darlington Road
RICHMOND
North Yorkshire
DL10 7DA
Tel No. 01748 823414

St John Fisher Catholic High
School
Hookstone Drive
HARROGATE
North Yorkshire
HG2 8PT
Tel No. 01423 887254

Ermysted's Grammar School
Gargrave Road
SKIPTON
North Yorkshire
BD23 1PL
Tel No. 01756 792186

Appendix 5

Neighbouring Local Authorities

Bradford

Pupil Access Manager
Education Bradford
Future House, Bolling Road
BRADFORD
BD4 7EB
Tel No: 01274 385604

Cumbria

Corporate Director – Pupils Services
5 Portland Square
CARLISLE
CA1 1PU
Tel No. 01228 606877

Darlington

Pupils's Information Service
Town Hall,
Feethams
DARLINGTON
L1 5QT
Tel No. 01325 380651

Doncaster

Director of Education and Culture
Admissions and Pupil Services
The Council House
College Road
DONCASTER
DN1 3AD
Tel No. 01302 737204/727234

Durham

School Admissions
Education Offices
County Hall
DURHAM
DH1 5UJ
Tel No. 0191 383 3115

East Riding of Yorkshire

Admissions Team
Pupils, Family & Adult Services
County Hall,
BEVERLEY
HU17 9BA
Tel No.01482 392130/392131/392132

Lancashire

Director of Education
PO Box 61,
County Hall
PRESTON
PR1 0LD
Tel No. 01772 254868

Leeds

Admissions & Transport Team
Leeds Education
10th Floor West
Merrion House
LEEDS LS2 8DT
Tel No. 0113 2475729

Middlesbrough

Corporate Director, Families and
Learning
Middlesbrough Council
PO Box 69, First Floor
Vancouver House
Gurney Street
MIDDLESBROUGH
TS1 1 EL
Tel No. 01642 728092

Redcar and Cleveland

School Admissions
Redcar and Cleveland Borough
Council, Council Offices
PO Box 83, Kirkleatham Street
REDCAR
TS10 1YA
Tel No. 01642 444108

Stockton on Tees

School Admissions
Stockton-on-Tees Borough
Council
PO Box 228,
Municipal Buildings, Church Road
STOCKTON ON TEES
TS18 1XE
Tel No. 01642 526605

Wakefield

School Admissions
County Hall,
WAKEFIELD
WF1 2QL
Tel No. 01924 305616/305617

York

Education Access Team
Learning, Culture and Pupil
Services
City of York Council
Mill House
North Street
YORK YO1 6JD
Tel No. 01904 554248/554239

CO-ORDINATED ADMISSION ARRANGEMENTS

PRIMARY & SECONDARY
IN-YEAR ADMISSIONS 2014/15

Introduction

1. In-year admissions are those which occur outside of the normal admissions round. The normal admissions round; refers to admissions which admit children into infant, junior, primary, middle or secondary school in the first year of entry. These applications become in-year on or after 2 March for secondary applications and on or after 17 April for primary applications.
2. There is no requirement for Local Authorities to co-ordinate in-year applications from the offer year 2013/14 and all subsequent years but they must provide information on their website to show how in-year applications can be made and will be dealt with. Local Authorities must, on request, provide information to a parent about the places available in all schools within its area. A preference form should be completed by parents when applying for a school place for their child at any Community or Voluntary Controlled school within North Yorkshire. A preference form will also need to be completed for any Voluntary Aided, Foundation, Trust primary and secondary schools and Academies who have agreed that North Yorkshire Local Authority continue co-ordinating in-year admissions on their behalf. Any parent can apply for a place for their child at any time to any school.
3. In determining applications for school places outside the normal admissions round, whether in-year or at the start of a school year which is not a normal point of entry to the school, admission authorities must comply with parental preference unless the published oversubscription criteria or one of the statutory reasons for refusing admission applies.
4. All applications outside of the normal admissions round for Community, Voluntary Controlled and any Voluntary Aided, Foundation, Trust, primary and secondary schools and Academies that have agreed to continue co-ordinating with North Yorkshire Local Authority will be processed and if applicable offered by the Local Authority. Schools that are their own admission authority and are not continuing to co-ordinate in-year admissions with North Yorkshire Local Authority must communicate the availability of places to the Local Authority when requested and must, in receipt of an in-year application notify the Local Authority of both the application and its outcome. The Admission Authority must also inform parents of their right to appeal against the refusal of a school place.
5. The in-year co-ordinated scheme does not apply to a looked after child, a previously looked after child or a child with a statement of Special Educational Needs naming the school in question, as these children must be admitted.
6. Each Local Authority must have a Fair Access Protocol, agreed with the majority of schools in its area to ensure that, outside the normal admissions round, unplaced children, especially the most vulnerable, are offered a place at a suitable school as quickly as possible. There is no

duty for Local Authorities or admission authorities to comply with parental preference when allocating places through the Fair Access Protocol.

7. Parents who do not wish to accept a place at a school offered to them must notify the admission authority within 2 weeks of the offer being made.

Applying for a school place

8. North Yorkshire Local Authority in-year preference forms should be completed by parents living or moving into North Yorkshire requesting a place at any North Yorkshire primary or secondary school. Proof of residency may be required.
9. If a child already attending a North Yorkshire school wishes to transfer to another school, parents must, in the first instance discuss the transfer with the current school that the child attends. If they still wish the transfer to proceed, part C of the in-year transfer form should be completed by the school, be given to the parents and then forwarded to the Local Authority.
10. Where parents apply for a school place whilst living abroad, the application will not be processed until their return to the UK. Exceptions to this would be when an application is received from a forces family and is accompanied by an official letter that declares a relocation date and a unit postal address or an area address. We would also accept applications for school places from parents living abroad if they have an address in the UK and they can provide proof that they lived at that address prior to their move abroad and will be returning to that property.
11. When we receive an in-year preference form from a parent living in North Yorkshire requesting any North Yorkshire school, we will process the form by attempting to comply with the parent's highest ranked preference of school. We will liaise with the school listed as the highest preference.
12. If we are able to allocate the highest ranked preference on the form we will send an offer of that school place to the parent. If we are unable to allocate a place we will offer the statutory right of appeal and will then consider other schools listed in order of preference and will offer a place at one of those schools if possible. If we are unable to do so we will again offer parents the statutory right of appeal or ask that the governors of Voluntary Aided, Foundation or Trust schools who have agreed for North Yorkshire Local Authority to co-ordinate in-year admissions do so. Parents can appeal for a place at an Academy and would need to contact the Local Authority for information on how to do so.
13. When we receive a request for a place in the normal year of entry, if the school is oversubscribed a waiting list will be maintained by the relevant admission authority until 31 December 2014.

14. We require a reply within 5 working days from schools informing us if they are able to accommodate additional children. If they are oversubscribed we will offer parents the statutory right of appeal.
15. Voluntary Aided schools may require parents to complete a supplementary information form available from the school before a school place can be considered.
16. If parents name a school other than their normal area school, they will normally be responsible for transport.

North Yorkshire County Council
Children & Young People's Service

IN YEAR FAIR ACCESS PROTOCOL

- 1.0** The Education and Inspections Act 2006 introduced a requirement for each local authority to have in place an In-Year Fair Access Protocol (IYFAP) by September 2007. Further guidance of this requirement is provided in the School Admissions Code 2010, published in September 2010.

Each local authority must have a Fair Access Protocol, agreed with the majority of schools in its area, which sets out how, outside the normal admissions round, schools in the area will admit their fair share of children with challenging behaviour, children excluded from other schools and children who arrive outside the admissions round who may have difficulty securing a school place. In these circumstances, admission authorities may, if necessary, admit above their Published Admission Number.

- 1.1** **ALL** admission authorities must participate in the In Year Fair Access Protocol in order to ensure that unplaced children are allocated a school place quickly and that no school takes more than its share of children with challenging behaviour. **There is no duty for local authorities or admission authorities to comply with parental preference when allocating places through the In Year Fair Access Protocol.**

2.0 Purpose of Protocol

- 2.1** The operation of In Year Fair Access Protocols is outside the arrangements of co-ordination and is triggered when a parent of an eligible child has not secured a place under in-year admission procedures, even following the outcome of an appeal. The purpose of the protocol is:
- 2.2** To ensure that for in year admissions (i.e. outside of the normal admissions round) children are admitted to a suitable school as quickly as possible.
- 2.3** To encourage the equitable distribution of children needing to be admitted in year so that no school is overburdened.

3.0 To Which Groups of Children does the Protocol Apply?

- 3.1** The list of children to be included in an In Year Fair Access Protocol includes the following children of compulsory school age who may have difficulty securing a school place. The following are a minimum required by the School Admissions Code:-

- Children from the criminal justice system or Pupil Referral Units who need to be reintegrated into mainstream education;
- Children who have been out of education for 2 months or more;
- Children of Gypsies, Roma, Travellers, refugees and asylum seekers;
- Children who are homeless;
- Children with unsupportive family backgrounds for whom a place has not been sought;
- Children who are carers; and
- Children with special education needs, disabilities or medical conditions (but without a statement).

The following groups of children have been agreed with the majority of schools in the area.

- Children permanently excluded from a school or children with fixed term exclusions exceeding 15 days in the current academic year;
- Children without a school place and with a history of serious attendance problems (i.e. less than 50%);
- Looked After Children

- 3.2** It is important to emphasise that, **in the vast majority of cases, children requiring a school place will continue to be admitted in accordance with the usual admission procedures, rather than through the protocol.**
- 3.3** Mid-year admissions where a child is not considered hard to place, will be managed through the usual admission procedure in line with parental preference.
- 3.4** The protocol does not cover the admission of children with statements of SEN which will continue to be managed through the statutory assessment and statementing process.

4.0 General Application of the Protocol

- 4.1** In each area of the County, at secondary level, a local Collaborative panel including secondary Headteachers or their representatives will meet on a regular basis. All Collaboratives in North Yorkshire LA meet regularly: Craven, Hambleton and Richmondshire, Harrogate, Ryedale, Scarborough and Selby meet every fortnight and Whitby meet once a month.

- 4.2 A key purpose of the panel will be to manage in year admissions where the protocol criteria apply.
- 4.3 No school should take more than its share of children with challenging behaviour.
- 4.4 All local partnership schools, including those who are their own admissions authority, will agree to admit 1 hard to place pupil in each year group per academic year. Collaborative panels will consider a 'weighting' for small secondary schools where the impact on small year groups may be considerable.
- 4.5 Schools will not insist on an appeal being heard before admitting a child under this protocol.
- 4.6 Schools will not refuse to admit a pupil who has been denied a place at that school at appeal, if the protocol identifies that school as the one to admit the child.
- 4.7 The panel must take account of any genuine concerns about the admission, for example a previous serious breakdown in the relationship between the school and the family, or a strong aversion to, or desire for the religious ethos of a school.
- 4.8 For a pupil to be placed at a North Yorkshire Grammar School in line with the In Year Fair Access criteria, he or she must also meet the academic criteria for that school.
- 4.9 Schools must respond within the timescales specified in this protocol, to requests for admission, so that the admission of the pupil is not delayed.**
- 4.10 Wherever possible, pupils with a religious affiliation should be matched to a suitable school. If the school with a religious affiliation has already taken a pupil under the protocol in that year group, then the pupil may be offered a place at a different school that doesn't have the religious affiliation.
- 4.11 Admissions agreed between schools under the Scheme of Managed Moves do not count as places allocated under this protocol. The local authority will collate data on the two schemes separately and make the data available to panels on a regular basis.

5.0 Local Flexibility

- 5.1** Whilst working within the spirit of the protocol a local Collaborative panel must use discretion and judgement to achieve the best outcome for the child concerned and other children. For instance, one school may have compelling reasons (agreed by the panel) for not admitting to a particular year group at that time. The school might therefore agree to make 2 places available in a different year group.

6.0 Monitoring Arrangements

- 6.1** All mid-year admissions under the protocol will be monitored by the local authority and the local Collaborative panel.
- 6.2** A local authority officer will attend all Collaborative Panels wherever possible. This will usually be the Lead for Out of School Provision and/or a colleague from the Admissions team.

7.0 Additional Support

- 7.1** Additional advice for schools admitting children under this protocol may be available from the local authority e.g. from the Education of Looked After Children team. This discussion should take place at the Collaborative meeting.

8.0 Timescales

- 8.1** All referrals under this protocol should be considered within these timescales;

Within 10 working days of the panel meeting, a panel representative will discuss admission and potential school(s) with parent and pupil.

Within 15 days of a panel meeting, the identified school will invite the parent and the young person for an admissions meeting with the opportunity to view the school and formulate an integration plan.

Within 20 days the child should be admitted on roll and start attending the identified school.

9.0 Actions by Schools that Contravene the Agreement

9.1 Schools in the local partnership agree not to advise parents to:

- remove their child from school and find another school.
- remove their child from the roll of the school and voluntarily educate at home.

10.0 Transport

10.1 Free or assisted transport will be provided to enable a pupil to attend the school agreed by the panel if it is over two miles from home for primary age pupils and three miles from home for secondary pupils. This arrangement currently applies to pupils permanently excluded from school.

11.0 Financial Procedures

11.1 Where a pupil is permanently excluded the excluding school must return any remaining Age-Weighted Pupil Unit (AWPU) for that particular pupil to the local authority for transfer to the receiving school.

12.0 Cross Border Issues

12.1 The local authority will consult with neighbouring authorities over financial support and equity for pupils who meet the In Year Fair Access Protocol, and who attend school in one authority, and live in another.

Admission to primary school Common application form September 2013/2014

C4

Please complete this form in BLOCK CAPITALS and in BLACK INK and return it before **15 January 2013** to:
The admissions team, Jesmond House, 31-33 Victoria Avenue, Harrogate, HG1 5QE. Or you can apply online at
www.northyorks.gov.uk/admissions. **WARNING:** This form should only be completed by the parent or carer of the child.

A: Pupil details

Child's first name.....Middle name.....Last name.....

Gender: M F Date of birth.....

Current residential address.....

.....

.....Postcode.....Home telephone no.....

Name and address of child's current school/nursery.....

.....Postcode.....

Does your child have a statement of special educational needs (SEN)? *(please tick)* Yes No

Is your child undergoing statutory assessment for SEN? *(please tick)* Yes No

Is the child in the care of a local authority? *(please tick)* Yes No

If yes then please state which local authority.....

Was your child a previously looked after child (that is a child who was adopted, or subject to a residence order or special guardianship order). Please provide a copy of the adoption/residence/special guardianship order. Yes No

B: Brothers and sisters – siblings attending preferred school in September 2013, see page 7 of the summary guide under ‘tie-break’.

Forename	Middle name(s)	Surname	Date of birth	Gender (M/F)	School attending in Sept 2013
.....
.....
.....

C: Parent(s)/carer(s) details – The application should be made by the parent(s)/carer(s) that your child normally lives with. See glossary in summary guide page 24.

Parent/carers 1

Title.....Forename(s).....

Surname.....

Relationship to pupil.....

Do you have parental responsibility for this child?
(please tick) Yes No

Home telephone no.....

Daytime telephone no.....

Mobile no.....

Email.....

Home address (if different from above).....

.....

.....

..... Postcode.....

Parent/carers 2

Title.....Forename(s).....

Surname.....

Relationship to pupil.....

Do you have parental responsibility for this child?
(please tick) Yes No

Home telephone no.....

Daytime telephone no.....

Mobile no.....

Email.....

Home address (if different from above).....

.....

.....

..... Postcode.....

Please tick here if a copy of all correspondence is to go to parent/carers 2

Crown service Yes No

Please select 'Yes' if you are applying for a place for a child of UK service personnel or other Crown servants. You may be asked for an official MoD, FCO or GCHQ letter declaring your relocation date.

D: School preferences – please name up to five schools in order of preference.

Think carefully about your preferences; it may not be possible to change them. **See page 23 of the summary guide.** Please note: listing only one school or listing the same school five times will not improve your chances of being offered a place there, and may lead to us offering a place at a school you would prefer your child not to attend.

- 1.....
- 2.....
- 3.....
- 4.....
- 5.....

E: Special reasons for your choice of school. See frequently asked questions on page 19 of the summary guide. (Professional evidence will be required, by 15 January 2013, to support special social or medical reasons.).....

.....
.....
.....

Faith: Please provide religious affiliation if relevant.....

Any additional information.....
.....
.....
.....

F: Declaration: I have read the guide for parents before completing this form, and I:

- 1. certify that, to the best of my knowledge, the details I have provided are correct. I understand that a place offered on the basis of inaccurate information may be withdrawn.
- 2. certify that I am the parent or carer for this child.

Signed..... Date

Name (*please print*).....

If you have any further queries please contact the education office, details are on the back cover of the Guide for parents 2013/2014. The information provided on this form will be used in accordance with the Data Protection Act 1998. Information may be shared with other local authorities under coordinated admission arrangements and health personnel where appropriate.

County Council - Appendix 5D(b)

Transfer of pupils from primary to secondary school

Common application form September 2013/2014

C1

Please complete this form in BLOCK CAPITALS and in BLACK INK and return it before **31 October 2012** to: The admissions team, Jesmond House, 31-33 Victoria Avenue, Harrogate, HG1 5QE. Or you can apply online at www.northyorks.gov.uk/admissions. **WARNING:** This form should only be completed by the parent or carer of the child.

A: Pupil details

Child's first name.....Middle name.....Last name.....

Gender: M F Date of birth.....

Current residential address.....

.....Postcode.....Home telephone no.....

Name and address of child's current school.....

.....Postcode.....

Does your child have a statement of special educational needs (SEN)? *(please tick)* Yes No

Is your child undergoing statutory assessment for SEN? *(please tick)* Yes No

Is the child in the care of a local authority? *(please tick)* Yes No

If yes then please state which local authority.....

Was your child a previously looked after child (that is a child who was adopted, or subject to a residence order or special guardianship order). Please provide a copy of the adoption/residence/special guardianship order. Yes No

B: Brothers and sisters – siblings attending preferred school in September 2013, see page 7 of the summary guide under 'tie-break'.

Forename	Middle name(s)	Surname	Date of birth	Gender (M/F)	School attending in Sept 2013
.....
.....
.....

C: Parent(s)/carer(s) details – The application should be made by the parent(s)/carer(s) that your child normally lives with. See glossary in summary guide page 24.

Parent/carer 1

Title.....Forename(s).....

Surname.....

Relationship to pupil.....

Do you have parental responsibility for this child?
(please tick) Yes No

Home telephone no.....

Daytime telephone no.....

Mobile no.....

Email.....

Home address (if different from above).....

..... Postcode.....

Parent/carer 2

Title.....Forename(s).....

Surname.....

Relationship to pupil.....

Do you have parental responsibility for this child?
(please tick) Yes No

Home telephone no.....

Daytime telephone no.....

Mobile no.....

Email.....

Home address (if different from above).....

..... Postcode.....

Please tick here if a copy of all correspondence is to go to parent/carer 2

Crown service Yes No

Please select 'Yes' if you are applying for a place for a child of UK service personnel or other Crown servants. You may be asked for an official MoD, FCO or GCHQ letter declaring your relocation date.

D: School preferences – please name up to five schools in order of preference.

Think carefully about your preferences; it may not be possible to change them. **See page 23 of the summary guide.** Please note: listing only one school or listing the same school five times will not improve your chances of being offered a place there, and may lead to us offering a place at a school you would prefer your child not to attend.

- 1.....
- 2.....
- 3.....
- 4.....
- 5.....

If you have asked that your child be considered for a place at Ripon Grammar School please add, next to the school name, if you would like to be considered for a day place, a weekly boarding place or a termly boarding place. If you would like to be considered for both day and boarding places, you should list them as separate preferences.

E: Special reasons for your choice of school. See frequently asked questions on page 19 of the summary guide. (Professional evidence will be required, by 31 October 2012, to support special social or medical reasons.).....

.....
.....
.....

Faith: Please provide religious affiliation if relevant.....

Any additional information.....
.....
.....
.....

F: Declaration: I have read the guide for parents before completing this form, and I:

- 1. certify that, to the best of my knowledge, the details I have provided are correct. I understand that a place offered on the basis of inaccurate information may be withdrawn.
- 2. certify that I am the parent or carer for this child.

Signed..... Date

Name *(please print)*.....

If you have any further queries please contact the admissions team, details are on the front of this form. The information provided on this form will be used in accordance with the Data Protection Act 1998. Information may be shared with other local authorities under coordinated admission arrangements and health personnel where appropriate.

Transfer of pupils from infant to junior school

Common application form September 2013/2014

C5

Please complete this form in BLOCK CAPITALS and in BLACK INK and return it before **15 January 2013** to: The admissions team, Jesmond House, 31-33 Victoria Avenue, Harrogate, HG1 5QE. Or you can apply online at www.northyorks.gov.uk/admissions. **WARNING:** This form should only be completed by the parent or carer of the child.

A: Pupil details

Child's first name.....Middle name.....Last name.....

Gender: M F Date of birth.....

Current residential address.....

.....Postcode.....Home telephone no.....

Name and address of child's current school.....

.....Postcode.....

Does your child have a statement of special educational needs (SEN)? (*please tick*) Yes No

Is your child undergoing statutory assessment for SEN? (*please tick*) Yes No

Is the child in the care of a local authority? (*please tick*) Yes No

If yes then please state which local authority.....

Was your child a previously looked after child (that is a child who was adopted, or subject to a residence order or special guardianship order). Please provide a copy of the adoption/residence/special guardianship order. Yes No

B: Brothers and sisters – siblings attending preferred school in September 2013, see page 7 of the summary guide under 'tie-break'.

Forename	Middle name(s)	Surname	Date of birth	Gender (M/F)	School attending in Sept 2013
.....
.....
.....

C: Parent(s)/carer(s) details – The application should be made by the parent(s)/carer(s) that your child normally lives with. See glossary in summary guide page 24.

Parent/carers 1

Title.....Forename(s).....

Surname.....

Relationship to pupil.....

Do you have parental responsibility for this child?
(*please tick*) Yes No

Home telephone no.....

Daytime telephone no.....

Mobile no.....

Email.....

Home address (if different from above).....

.....

.....

..... Postcode.....

Parent/carers 2

Title.....Forename(s).....

Surname.....

Relationship to pupil.....

Do you have parental responsibility for this child?
(*please tick*) Yes No

Home telephone no.....

Daytime telephone no.....

Mobile no.....

Email.....

Home address (if different from above).....

.....

.....

..... Postcode.....

Please tick here if a copy of all correspondence is to go to parent/carers 2

Crown service Yes No

Please select 'Yes' if you are applying for a place for a child of UK service personnel or other Crown servants. You may be asked for an official MoD, FCO or GCHQ letter declaring your relocation date.

D: School preferences – please name up to five schools in order of preference.

Think carefully about your preferences; it may not be possible to change them. **See page 23 of the summary guide.** Please note: listing only one school or listing the same school five times will not improve your chances of being offered a place there, and may lead to us offering a place at a school you would prefer your child not to attend.

- 1.....
- 2.....
- 3.....
- 4.....
- 5.....

E: Special reasons for your choice of school. See frequently asked questions on page 19 of the summary guide. (Professional evidence will be required, by 15 January 2013, to support special social or medical reasons.).....

.....
.....
.....

Faith: Please provide religious affiliation if relevant.....

Any additional information.....
.....
.....
.....

F: Declaration: I have read the guide for parents before completing this form, and I:

- 1. certify that, to the best of my knowledge, the details I have provided are correct. I understand that a place offered on the basis of inaccurate information may be withdrawn.
- 2. certify that I am the parent or carer for this child.

Signed..... Date

Name (*please print*).....

If you have any further queries please contact the education office, details are on the back cover of the Guide for parents 2013/2014. The information provided on this form will be used in accordance with the Data Protection Act 1998. Information may be shared with other local authorities under coordinated admission arrangements and health personnel where appropriate.

Transfer of pupils from Allertonshire School

Common application form September 2013/2014

C2

Please complete this form in BLOCK CAPITALS and in BLACK INK and return it before **31 October 2012** to:
The admissions team, Jesmond House, 31-33 Victoria Avenue, Harrogate, HG1 5QE. Or you can apply online at
www.northyorks.gov.uk/admissions. **WARNING:** This form should only be completed by the parent or carer of the child.

A: Pupil details

Child's first name.....Middle name.....Last name.....

Gender: M F Date of birth.....

Current residential address.....

.....Postcode.....Home telephone no.....

Name and address of child's current school.....

.....Postcode.....

Does your child have a statement of special educational needs (SEN)? (*please tick*) Yes No

Is your child undergoing statutory assessment for SEN? (*please tick*) Yes No

Is the child in the care of a local authority? (*please tick*) Yes No

If yes then please state which local authority.....

Was your child a previously looked after child (that is a child who was adopted, or subject to a residence order or special guardianship order). Please provide a copy of the adoption/residence/special guardianship order. Yes No

B: Brothers and sisters – siblings attending preferred school in September 2013, see page 7 of the summary guide under 'tie-break'.

Forename	Middle name(s)	Surname	Date of birth	Gender (M/F)	School attending in Sept 2013
.....
.....
.....

C: Parent(s)/carer(s) details – The application should be made by the parent(s)/carer(s) that your child normally lives with. See glossary in summary guide page 24.

Parent/carers 1

Title.....Forename(s).....

Surname.....

Relationship to pupil.....

Do you have parental responsibility for this child?
(*please tick*) Yes No

Home telephone no.....

Daytime telephone no.....

Mobile no.....

Email.....

Home address (if different from above).....

.....Postcode.....

Parent/carers 2

Title.....Forename(s).....

Surname.....

Relationship to pupil.....

Do you have parental responsibility for this child?
(*please tick*) Yes No

Home telephone no.....

Daytime telephone no.....

Mobile no.....

Email.....

Home address (if different from above).....

.....Postcode.....

Please tick here if a copy of all correspondence is to go to parent/carers 2

Crown service Yes No

Please select 'Yes' if you are applying for a place for a child of UK service personnel or other Crown servants. You may be asked for an official MoD, FCO or GCHQ letter declaring your relocation date.

D: School preferences – please name up to five schools in order of preference.

Think carefully about your preferences; it may not be possible to change them. **See page 23 of the summary guide.** Please note: listing only one school or listing the same school five times will not improve your chances of being offered a place there, and may lead to us offering a place at a school you would prefer your child not to attend.

- 1.....
- 2.....
- 3.....
- 4.....
- 5.....

If you have asked that your child be considered for a place at Ripon Grammar School please add, next to the school name, if you would like to be considered for a day place, a weekly boarding place or a termly boarding place. If you would like to be considered for both day and boarding places, you should list them as separate preferences.

E: Special reasons for your choice of school. See frequently asked questions on page 19 of the summary guide. (Professional evidence will be required, by 31 October 2012, to support special social or medical reasons.).....

.....
.....
.....

Faith: Please provide religious affiliation if relevant.....

Any additional information.....
.....
.....
.....

F: Declaration: I have read the guide for parents before completing this form, and I:

- 1. certify that, to the best of my knowledge, the details I have provided are correct. I understand that a place offered on the basis of inaccurate information may be withdrawn.
- 2. certify that I am the parent or carer for this child.

Signed..... Date

Name *(please print)*.....

If you have any further queries please contact the admissions team, details are on the front of this form. The information provided on this form will be used in accordance with the Data Protection Act 1998. Information may be shared with other local authorities under coordinated admission arrangements and health personnel where appropriate.

County Council - Appendix 5D(e)

Transfer of pupils from Caedmon and Eskdale Schools

Common application form September 2013/2014

C3

Please complete this form in BLOCK CAPITALS and in BLACK INK and return it before **31 October 2012** to: The admissions team, Jesmond House, 31-33 Victoria Avenue, Harrogate, HG1 5QE. Or you can apply online at www.northyorks.gov.uk/admissions. **WARNING:** This form should only be completed by the parent or carer of the child.

A: Pupil details

Child's first name.....Middle name.....Last name.....

Gender: M F Date of birth.....

Current residential address.....

.....Postcode.....Home telephone no.....

Name and address of child's current school.....

.....Postcode.....

Does your child have a statement of special educational needs (SEN)? (*please tick*) Yes No

Is your child undergoing statutory assessment for SEN? (*please tick*) Yes No

Is the child in the care of a local authority? (*please tick*) Yes No

If yes then please state which local authority.....

Was your child a previously looked after child (that is a child who was adopted, or subject to a residence order or special guardianship order). Please provide a copy of the adoption/residence/special guardianship order. Yes No

B: Brothers and sisters – siblings attending preferred school in September 2013, see page 7 of the summary guide under 'tie-break'.

Forename	Middle name(s)	Surname	Date of birth	Gender (M/F)	School attending in Sept 2013
.....
.....
.....

C: Parent(s)/carer(s) details – The application should be made by the parent(s)/carer(s) that your child normally lives with. See glossary in summary guide page 24.

Parent/carer 1

Title.....Forename(s).....

Surname.....

Relationship to pupil.....

Do you have parental responsibility for this child?
(*please tick*) Yes No

Home telephone no.....

Daytime telephone no.....

Mobile no.....

Email.....

Home address (if different from above).....

.....

.....

..... Postcode.....

Parent/carer 2

Title.....Forename(s).....

Surname.....

Relationship to pupil.....

Do you have parental responsibility for this child?
(*please tick*) Yes No

Home telephone no.....

Daytime telephone no.....

Mobile no.....

Email.....

Home address (if different from above).....

.....

.....

..... Postcode.....

Please tick here if a copy of all correspondence is to go to parent/carer 2

Crown service Yes No

Please select 'Yes' if you are applying for a place for a child of UK service personnel or other Crown servants. You may be asked for an official MoD, FCO or GCHQ letter declaring your relocation date.

D: School preferences – please name up to five schools in order of preference.

Think carefully about your preferences; it may not be possible to change them. **See page 23 of the summary guide.** Please note: listing only one school or listing the same school five times will not improve your chances of being offered a place there, and may lead to us offering a place at a school you would prefer your child not to attend.

- 1.....
- 2.....
- 3.....
- 4.....
- 5.....

If you have asked that your child be considered for a place at Ripon Grammar School please add, next to the school name, if you would like to be considered for a day place, a weekly boarding place or a termly boarding place. If you would like to be considered for both day and boarding places, you should list them as separate preferences.

E: Special reasons for your choice of school. See frequently asked questions on page 19 of the summary guide. (Professional evidence will be required, by 31 October 2012, to support special social or medical reasons.).....

.....
.....
.....

Faith: Please provide religious affiliation if relevant.....

Any additional information.....
.....
.....
.....

F: Declaration: I have read the guide for parents before completing this form, and I:

- 1. certify that, to the best of my knowledge, the details I have provided are correct. I understand that a place offered on the basis of inaccurate information may be withdrawn.
- 2. certify that I am the parent or carer for this child.

Signed..... Date

Name *(please print)*.....

If you have any further queries please contact the admissions team, details are on the front of this form. The information provided on this form will be used in accordance with the Data Protection Act 1998. Information may be shared with other local authorities under coordinated admission arrangements and health personnel where appropriate.

DfE No.	School	Published Admission Limit 2013/14	2nd consultation LA proposed MAL 14/15	Nursery places fte	Pre reception
3000	Ainderby Steeple Church of England Primary School	15	15		
3001	Aiskew, Leeming Bar Church of England Primary School	14	14		
2150	Alanbrooke School	15	15		
3616	All Saints Roman Catholic Primary School, Thirsk	14	14		
3361	All Saints, Church of England School, Kirkby Overblow	15	15		
2245	Alne Primary School	15	20		
2242	Alverton Community Primary School (Alverton Infant School)	30	30	26	
2246	Amotherby Community Primary School	25	25		
2080	Applegarth Primary School	40	40		
2301	Appleton Roebuck Primary School	12	15		6
2247	Appleton Wiske Community Primary School	14	14		
3006	Arkengarthdale Church of England Primary School	8	8		
3289	Askrigg Voluntary Controlled Primary School	12	12		
2302	Askwith Community Primary School	13	13		2
3350	Austwick Church of England (V.A.) Primary School	10	10	6.5	
3008	Bainbridge Church of England Primary and Nursery School	8	8	6.5	
3009	Baldersby St. James Church of England Voluntary Controlled Primary School	8	8		
3369	Barkston Ash Catholic Primary School	20	20		
2400	Barlby Bridge Community Primary School	22	22	26	
2401	Barlby Community Primary School	42	42	26	
3223	Barlow Church of England Voluntary Controlled Primary School	15	12		
2108	Barrowcliff Nursery & Infant School	60	60	19.5	
3133	Barton Church of England Primary School	11	11		
2348	Beckwithshaw Community Primary School	14	14		
3010	Bedale Church of England Primary School	47	47		
3012	Bilsdale Midcable Chop Gate Church of England Voluntary Controlled Primary School	6	7		
3226	Birstwith Church of England Primary School	12	12		
3227	Bishop Monkton Church of England Primary School	15	15		
3228	Bishop Thornton Church of England Primary School	8	8		
3301	Bolton-on-Swale St Mary's Church of England Primary School	14	14		
2309	Boroughbridge Primary School	36	40		
2310	Bradleys Both Community Primary School	19	19		
3231	Brayton Church of England Voluntary Controlled Infant School	60	60		15
2379	Brayton Community Junior School	60	60		
2250	Brompton & Sawdon Community Primary School	10	10		
2249	Brompton Community Primary School	22	22	13	
3015	Brompton-on-Swale Church of England Primary School	30	30		
2225	Broomfield School	35	35		
2311	Brotherton & Byram Community Primary School	30	30	26	
2218	Bullmoor Junior School	30	30		
3337	Burneston Church of England (Voluntary Aided) Primary School	19	19		
3352	Burnsall Voluntary Aided Primary School	12	12		
3356	Burnt Yates Church of England Primary School	8	8		
3232	Burton Leonard Church of England Primary School	10	10		
2312	Burton Salmon Community Primary School	7	7		
2387	Camblesforth Community Primary School	17	17		
3354	Carleton Endowed School	22	20		
3306	Carlton and Faceby Church of England Voluntary Aided Primary School	8	8		
2252	Carlton Miniott Community Primary School	29	27		
2314	Carlton-in-Snaith Community Primary School	28	28		
2256	Castleton Community Primary School	8	8		

DfE No. 815-	School	Published Admission Limit 2013/14	2nd consultation LA proposed MAL 14/15	Nursery places fte	Pre reception
2212	Catterick Garrison, Carnagill Community Primary School	30	30	13	
2173	Catterick Garrison, Le Cateau Community Primary School	59	60	39	
2189	Catterick Garrison, Wavell Community Infant School	72	72	23	
2188	Catterick Garrison, Wavell Community Junior School	60	60		
3355	Cawood Church of England Voluntary Aided Primary School	25	25	13	
2224	Cayton Community Primary School	30	30		
3233	Chapel Haddlesey Church of England Voluntary Controlled Primary School	7	7		
3273	Christ Church Church of England Voluntary (Controlled) Primary School	20	20		
3234	Clapham Church of England Voluntary Controlled Primary School	10	10		
3150	Cliffe Voluntary Controlled Primary School	16	16		
2167	Colburn Community Primary School	30	30	26	
2316	Cononley Community Primary School	21	20		
2317	Cowling Community Primary School	19	19		
3235	Cracoe and Rylstone Voluntary Controlled Church of England Primary School	7	7		
3020	Crakehall Church of England Primary School	14	14		
3021	Crayke Church of England Voluntary Controlled Primary School	13	13		
3022	Croft Church of England Primary School	15	15	6.5	
3357	Dacre Braithwaite Church of England Primary School	10	10		
3025	Danby Church of England Voluntary Controlled School	10	10		
2347	Darley Community Primary School	14	14		
2165	Dishforth Airfield Community Primary School	15	15		
3027	Dishforth Church of England Voluntary Controlled Primary School	12	12	6.5	
2318	Drax Community Primary School	10	10		
2164	Easingwold Community Primary School	45	45		
2257	East Ayton Community Primary School	30	30		
3030	East Cowton Church of England Primary School	12	8		
3308	Egton Church of England Voluntary Aided Primary School	8	8		
3236	Embsay Church of England Voluntary Controlled Primary School	30	30		
3034	Eppleby Forcett Church of England Primary School	7	7		
3153	Escrick Church of England Voluntary Controlled Primary School	17	17		
2320	Fairburn Community Primary School	8	8		
3632	Farnley Church of England Voluntary Aided Primary School	15	15		
3154	Filey Church of England Voluntary Controlled Infant and Nursery School	76	76	26	
2413	Filey Junior School	85	85		
3237	Follifoot Church of England Primary School	9	9		
3288	Forest of Galtres Anglican/Methodist Primary School	27	27		
3039	Foston Church of England Voluntary Controlled Primary School	4	4		
3266	Fountains Church of England Primary School	15	15		
3238	Fountains Earth, Lofthouse Church of England Endowed Primary School	6	6		
3139	Fylingdales Church of England Voluntary Controlled Primary School	18	18		
3285	Gargrave Church of England Voluntary Controlled Primary School	18	18		
2324	Giggleswick Primary School	13	13		
3040	Gillamoore Church of England Voluntary Controlled Primary School	8	7		
2117	Gladstone Road Infant School	116	120		
2116	Gladstone Road Junior School	116	116		
2041	Glaisdale Primary School	8	8		
2338	Glasshouses Community Primary School	10	10		
2393	Glusburn Community Primary School	48	48	26	
2043	Goathland Primary School	7	7		
3240	Goldborough Church of England Primary School	12	12		
3241	Grassington Church of England (Voluntary Controlled) Primary School	12	12		

DfE No.	School	Published Admission Limit 2013/14	2nd consultation LA proposed MAL 14/15	Nursery places fte	Pre reception
815-					
2426	Great Ayton, Roseberry Community Primary School	30/21	30/21		
2327	Great Ouseburn Community Primary School	14	14		7.5
2047	Great Smeaton Community Primary School ²	10	0		
3242	Green Hammerton Church of England Primary School	17	17		
3243	Grewelthorpe Church of England Primary School	10	10		
3207	Gunnerside Methodist Primary School	7	7		
3045	Hackforth and Hornby Church of England Primary School	6	6		
3046	Hackness Church of England Voluntary Controlled Primary School	10	10		
3244	Hambleton Church of England Voluntary Controlled Primary School	25	25		
3245	Hampsthwaite Church of England Primary School	16	16	6.5	
2328	Harrogate, Bilton Grange Community Primary School	48	48		
2383	Harrogate, Coppice Valley Community Primary School	30	30		
2329	Harrogate, Grove Road Community Primary School	40	40	26	
2368	Harrogate, Hookstone Chase Community Primary School	38	40		
2330	Harrogate, New Park Community Primary School	30	30		
2376	Harrogate, Oatlands Community Junior School	75	75		
2372	Harrogate, Pannal Community Primary School	45	45		
2424	Harrogate, Saltergate Community Junior School	59	60		
3247	Harrogate, St. Peter's Church of England Primary School	40	40		
2332	Harrogate, Starbeck Community Primary School	46	50	26	
2056	Hawes Community Primary School	15	15	6.5	
3050	Hawsker cum Stainsacre Church of England Voluntary Controlled Primary School	12	12		
2336	Hellifield Community Primary School	15	15		
2236	Helmsley Community Primary School	24	24	8.5	
2402	Hemingbrough Community Primary School	30	30		
2337	Hensall Community Primary School	18	18		
3155	Hertford Vale Church of England Voluntary Controlled Primary School, Staxton	18	18		
2305	High Bentham Community Primary School	25	25	13	
3053	Hipswell Church of England Primary School	24	24	10	
2340	Hirst Courtney & Temple Hirst Community Primary School	7	7		
3284	Holy Trinity Church of England Infant School	65	75	26	
3263	Holy Trinity Church of England Junior School	67	60		
3358	Horton-in-Ribblesdale Church of England Voluntary Aided Primary School	10	10	6.5	
3054	Hovingham Church of England Voluntary Controlled Primary School	8	8		
3055	Huby Church of England Voluntary Controlled Primary School	14	16		
2403	Hunmanby Primary School	30	30	26	
2063	Hunton and Arrathorne Community Primary School	10	10		
3057	Husthwaite Church of England Voluntary Controlled Primary School	15	15	6.5	
2228	Hutton Rudby Primary School	30	30		
3336	Ingleby Arncliffe Church of England Voluntary Aided Primary School	11	11		
3060	Ingleby Greenhow Church of England Voluntary Controlled Primary School	10	10		
2391	Ingleton Primary School	25	26	26	
3076	Kell Bank Church of England Primary School	5	5		
2422	Kellington Primary School	19	19	13	
2321	Kettleing Felliscliffe Community Primary School	8	8		
2343	Kettlewell Primary School	7	7		5
3287	Kildwick Church of England (Voluntary Controlled) Primary School	17	17		
3248	Killinghall Church of England Primary School	15	15		
3062	Kirby Hill Church of England Primary School	17	17	13	
3251	Kirk Fenton Parochial Church of England Voluntary Controlled Primary School	27	30	13	
3252	Kirk Hammerton Church of England Primary School	12	12		

DfE No.	School	Published Admission Limit 2013/14	2nd consultation LA proposed MAL 14/15	Nursery places fte	Pre reception
3253	Kirk Smeaton Church of England (Voluntary Controlled) Primary School	12	12		
3315	Kirkby & Great Broughton Church of England Voluntary Aided Primary School	18	18		
3065	Kirkby Fleetham Church of England Primary School	9	9		
3360	Kirkby in Malhamdale United Voluntary Aided Primary School	12	12		
3249	Kirkby Malzeard Church of England Primary School	15	15		
2064	Kirkbymoorside Community Primary School	30	35	15	
2377	Knaresborough, Aspin Park Community Primary School	60	60		
2389	Knaresborough, Meadowside Community Primary School	30	30		
3068	Knayton Church of England Voluntary Controlled Primary School	12	12		
2404	Langton Primary School	15	15		
2042	Lealholm Primary School	8	8		
2405	Leavening Community Primary School	10	10	10	
2040	Leeming and Londonderry Community Primary School	8	8		
2166	Leeming RAF Community Primary School	40	40		
2065	Leyburn Community Primary School	30	30		
2233	Lindhead School	30	30		
2171	Linton-on-Ouse Primary School	15	15		
3255	Long Marston Church of England Voluntary Controlled Primary School	8	8		
3362	Long Preston Endowed Voluntary Aided Primary School	13	13		
2346	Lothersdale Community Primary School	15	15		
2406	Luttons Community Primary School	8	8		
3069	Lythe Church of England Voluntary Controlled Primary School	15	15		
2074	Malton Community Primary School	42	42	13	
3256	Markington Church of England Primary School	12	12		
3363	Marton-cum-Grafton Church of England Voluntary Aided Primary School	15	15		6.5
3042	Marwood Church of England Voluntary Controlled Infant School, Great Ayton	19	19		
3319	Masham Church of England VA Primary School	20	20		
3208	Melsonby Methodist Primary School	10	10		
3307	Michael Syddall Church of England (Aided) Primary School	36	36		
3320	Middleham Church of England Aided School	15	15		
3079	Middleton Tyas Church of England Primary School	22	22		
3257	Monk Fryston Church of England Voluntary Controlled Primary School	30	30		
2366	Moorside Infant School	36	36	26	
2367	Moorside Junior School	30	36		
2075	Nawton Community Primary School	11	11		
2076	Newby and Scalby Primary School	60	60		
2081	North & South Cowton Community Primary School	7	7		
2407	North Duffield Community Primary School	25	25		
3260	North Rigton Church of England (C) Primary School	13	15		
3258	North Stainley Church of England Primary School	8	8		
2163	Northallerton, Mill Hill Community Primary School	30	30		
2408	Norton Community Primary School	75	75	26	
5200	Nun Monkton Primary School	4	4		
2060	Oakridge Community Primary School	10	8	6.5	
2331	Oatlands Infant School	75	75		
2083	Osmotherley Primary School	10	10		
2235	Pickering Community Infant School	75	75	26	
2222	Pickering Community Junior School	75	75		
3088	Pickhill Church of England Primary School	9	9		
3365	Rathmell Church of England (Voluntary Aided) Primary School	9	9		5
3090	Ravensworth Church of England Primary School	12	12		

DfE No.	School	Published Admission Limit 2013/14	2nd consultation LA proposed MAL 14/15	Nursery places fte	Pre reception
2096	Reeth Community Primary School	8	8	13	
2410	Riccall Community Primary School	30	30		
3368	Richard Taylor Church of England Primary School	39	39		
3353	Richard Thornton's Church of England (Voluntary Aided) Primary School	15	15		
3092	Richmond Church of England Primary School	45	45	26	
3210	Richmond Methodist Primary School	45	45		
2411	Rillington Community Primary School	20	20		20
3261	Ripley Endowed (Church of England) School.	13	13		
3262	Ripon Cathedral Church of England Primary School	30	30	15	
2388	Ripon, Greystone Community Primary School	28	30	26	
3264	Roelcliffe Church of England Primary School	14	14		
2097	Romanby Primary School	40	40		
2098	Rosedale Abbey Community Primary School	7	7		
2382	Rossett Acre Primary School	60	60		
3126	Ruswarp Church of England Voluntary Controlled Primary School	15	15		
3902	Sacred Heart RC Primary, Northallerton	15	15		
2425	Saltergate Infant School	58	60	26	
3099	Sand Hutton Church of England Voluntary Controlled Primary School	11	11		
3267	Saxton Church of England Voluntary Controlled Primary School	10	10		
2109	Scarborough, Barrowcliff Community Junior School	60	60		
2161	Scarborough, Braeburn Community Junior School	66	66		
2112	Scarborough, Braeburn Infant & Nursery School	70	70		
2114	Scarborough, Friarage Community Primary School	45	60	26	
2118	Scarborough, Hinderwell Community Primary School	37	40	26	
2120	Scarborough, Northstead Community Primary School	87	90		
2170	Scarborough, Overdale Community Primary School	37	30		
2350	Scotton Lingerfield Community Primary School	12	12		
2223	Seamer & Irton Community Primary School	60	60		
3268	Selby Abbey Church of England Voluntary Controlled Primary School	51	55		
2351	Selby Community Primary School	48	48	26	
2390	Selby, Barwic Parade Community Primary School	35	35	26	
2418	Selby, Longman's Hill Community Primary School	30	30		
3101	Sessay Church of England Voluntary Controlled Primary School	15	15		
3270	Settle Church of England Voluntary Controlled Primary School	30	30		
3160	Settrington All Saints' Church of England Voluntary Controlled Primary School	9	9		
3271	Sharow Church of England Primary School	9	9		
3161	Sherburn Church of England Voluntary Controlled Primary School	8	8		11+
2421	Sherburn in Elmet, Athelstan Community Primary School	39	39	27	
2380	Sherburn in Elmet, Hungate Community Primary School	42	42	13	
2186	Sheriff Hutton Primary School	15	15		
2354	Sicklinghall Community Primary School	9	9		
2221	Sinnington Community Primary School	12	12		
3272	Skelton Newby Hall Church of England Primary School	6	6		
3274	Skipton Parish Church Church of England Voluntary Controlled Primary School	50	50		
2365	Skipton, Greatwood Community Primary School	30	30	17.5	
2355	Skipton, Ings Community Primary and Nursery School	12	12	6.5	
2356	Skipton, Water Street Community Primary School	30	30		
3035	Sleights Church of England Voluntary Controlled Primary School	15	15	6.5	
2132	Slingsby Community Primary School	7	7		
3108	Snainton Church of England Voluntary Controlled Primary School	10	10		
2133	Snape Community Primary School	7	7		

DfE No.	School	Published Admission Limit 2013/14	2nd consultation LA proposed MAL 14/15	Nursery places fte	Pre reception
3109	South Kilvington Church of England Voluntary Controlled Primary School	10	10		
2357	South Milford Community Primary School	30	30		
3291	South Otterington Church of England Voluntary Controlled Primary School	20	20		
2183	Sowerby Community Primary School	45	45		
3110	Spennithorne Church of England Primary School	12	12		
3275	Spofforth Church of England (Controlled) Primary School	15	15	6.5	
3903	St John's CE Primary School, Knaresborough	50	50		
3600	St. Benedict's Roman Catholic Primary School, Ampleforth	15	15		
3225	St. Cuthbert's Church of England Primary School, Pateley Bridge	17	17	6.5	
3631	St. George's Roman Catholic Primary School, Scarborough	15	15	15	
3602	St. Hedda's Roman Catholic Primary School	7	7		
3005	St. Hilda's Ampleforth Church of England Voluntary Controlled Primary School	7	7		
3620	St. Hilda's Roman Catholic Primary School	15	15		
3370	St. Joseph's Catholic Primary School, Bishop Thornton	8	8		
3378	St. Joseph's Catholic Primary School, Harrogate	30	30		
3376	St. Joseph's Catholic Primary School, Tadcaster	10	10		
3610	St. Joseph's Roman Catholic Primary School, Pickering	15	15	13	
3326	St. Martin's Church of England Voluntary Aided Primary School, Scarborough	40	40		
3371	St. Mary's Catholic Primary School, Knaresborough	30	30		
3373	St. Mary's Catholic Primary School, Selby	26	30		
3609	St. Mary's Roman Catholic Primary School, Malton	15	15		
3614	St. Mary's Roman Catholic Primary School, Richmond	30	30		
3124	St. Nicholas Church of England Primary School, West Tanfield	10	10		
3304	St. Peter's Brafferton Church of England Voluntary Aided Primary School	13	13		
3615	St. Peter's Roman Catholic Primary School	30	30		
3377	St. Robert's Catholic Primary School, Harrogate	40	40		
3375	St. Stephen's Catholic Primary School, Skipton	25	25	13	
3372	St. Wilfrid's Catholic Primary School, Ripon	20	20	10	
2061	Staithes, Seton Community Primary School	15	15	6.5	
2358	Staveley Community Primary School	10	10		
2138	Stillington Primary School	12	12		
2139	Stokesley Community Primary School	63	63	39	
2335	Summerbridge Community Primary School	12	12		
3276	Sutton in Craven Church of England Voluntary Controlled Primary School	15	16		
2359	Sutton in Craven Community Primary School	25	25		
3113	Sutton on the Forest Church of England Voluntary Controlled Primary School	13	13		
3335	Swainby and Potto Church of England Voluntary Aided Primary School	12	12		
2392	Tadcaster East Community Primary School	28	28	13	
2427	Tadcaster, Riverside Community Primary School	56	56	26	
3331	Terrington Church of England Voluntary Aided Primary School	9	9		
3351	The Boyle & Petyt Primary School	8	8		
2237	Thirsk Community Primary School	42	42	26	
3117	Thornton Dale Church of England Voluntary Controlled Primary School	26	26		
2360	Thornton in Craven Community Primary School	11	11		
3119	Thornton Watlass Church of England Primary School	7	7		
2381	Thorpe Willoughby Community Primary School	41	40		
3277	Threshfield School	17	17		
3278	Tockwith Church of England Voluntary Controlled Primary School	30	30		
3120	Topcliffe Church of England Voluntary Controlled Primary School	19	16		
3122	Warthill Church of England Voluntary Controlled Primary School	6	6		
3163	Weaverthorpe Church of England Voluntary Controlled Primary School	7	9	6.5	

DfE No.	School	Published Admission Limit 2013/14	2nd consultation LA proposed MAL 14/15	Nursery places fte	Pre reception
2151	Welburn Community Primary School	12	12		
3016	West Burton Church of England Primary School	7	7		
2197	West Cliff Primary School	30	30		
3165	West Heslerton Church of England Voluntary Controlled Primary School	8	10		6.5
2333	Western Primary School	52	52	52	
2206	Wheatcroft Community Primary School	30	30		
2190	Whitby, Airy Hill Community Primary School	30	30		
2154	Whitby, East Whitby Community Primary School	60	45	26	
2217	Whitby, Stakesby Community Primary School	34	34	26	
2363	Whitley & Eggborough Community Primary School	40	40		
2364	Willow Tree Community Primary School, Harrogate	75	75	39	
3282	Wistow Parochial Church of England Voluntary Controlled Primary School	20	20		
2430	Woodfield Primary School	30	22		
3130	Wykeham Church of England Voluntary Controlled Primary School	8	10		

	Schools with proposed Published Admission Numbers(PAN) lower than Indicated Admission Numbers (IAN)	Published Admission Limit 2013/14	Net capacity IAN as at Jan 2012	2nd consultation LA proposed PAN 14/15	Reasons
3227	Bishop Monkton Church of England Primary School	15	18	15	¹
2383	Harrogate, Coppice Valley Community Primary School	30	34	30	¹
2170	Scarborough, Overdale Community Primary School	37	37	30	¹
3262	Ripon Cathedral Church of England Primary School	30	34	30	¹

¹ To enable school to comply with Infant Class Size Legislation

² This school is an Academy

County Council - Appendix 5F

DfE number [815-]	School	Published Admission Number 2013/14	Sixth Form Limit 2013/14		Proposed PAN 2014/15	Proposed Sixth Form Limit 2014/15
4208	Aireville School	167	0		167	
4074	Allertonshire School	280	0		315	
4232	Barlby High School	150	0		165	
4052	Bedale High School	187	0		187	
4221	Boroughbridge High School	128	15		128	
4224	Brayton High School	241	0		241	
4059	Caedmon School	184	0		184	
4005	Easingwold School	210	75		210	75
4608	Ermysted's Grammar School	112	20		112	20
4041	Eskdale School	146	0		146	
4150	Filey School, A Technology College	110	0		110	
4069	George Pindar School	185	0		175	
4070	Graham School Science College	320	0		320	
4200	Harrogate Grammar School ³				256	
4219	Harrogate High School ³	257	10		257	10
4610	Holy Family RC High School	90	0		92	
4202	King James's School	253	35		253	35
4054	Lady Lumley's School	183	30		183	30
4077	Malton School	112	80		112	80
4223	Nidderdale High School & Community College	94	0		94	0
4503	Northallerton College	347	65		347	65
4152	Norton College ³					
4076	Richmond School	250	80		250	80
4203	Ripon Outwood Academy ³	125	15		135	15
4215	Ripon Grammar School	117 inc 14 boarders	30		117 inc 14 boarders	30
4004	Risedale Sports and Community College	180	0		180	0
4217	Rossett School ³					
4022	Ryedale School	122	0		124	0
4073	Scalby School	212	0		192	0
4225	Selby High School	237	0		237	
4205	Settle College	168	5		168	5
4216	Sherburn High School Specialist Science College	197	0		197	0
4518	Skipton Girls' High School ³					
4210	South Craven School, The Technology & Engineering College ³					
4611	St Aidans Church of England High School ³				226	100
4604	St Augustines Catholic School	96	0		96	
4605	St Francis Xavier School	90	0		90	
4609	St John Fisher Catholic High School	186	30		186	30
4047	Stokesley School	180	20		222	20
4211	Tadcaster Grammar School Business and Enterprise College	262	10		262	10
4035	Thirsk School & Sixth Form College	180	10		180	10
4206	Upper Wharfedale School - A Specialist Sports College	58	0		58	
4075	The Wensleydale School	88	20		88	20
4039	Whitby Community College	295	20		295	20

DfE number [815-]	Schools with proposed Published Admission Numbers(PAN) lower than Indicated Admission Numbers (IAN)	Published Admission Number 2013/14	Sixth Form Limit 2013/14	IAL	Proposed PAN 2014/15	Proposed Sixth Form Limit 2014/15	Reasons
4069	George Pindar School	185	0	200	175		1
4073	Scalby School	212	0	212	192	0	1
4604	St Augustines Catholic School	96	0	99	96		1
4605	St Francis Xavier School	90	0	113	90		1
4211	Tadcaster Grammar School Business and Enterprise College	262	10	262	262	10	1
4035	Thirsk School & Sixth Form College	180	10	210	180	10	2

¹ Capacity issues² To manage in-year deficit by ensuring a 6 form entry rather than 7³ These schools are Academies

NORTH YORKSHIRE COUNTY COUNCIL
CHILDREN AND YOUNG PEOPLE'S SERVICE

Consultation

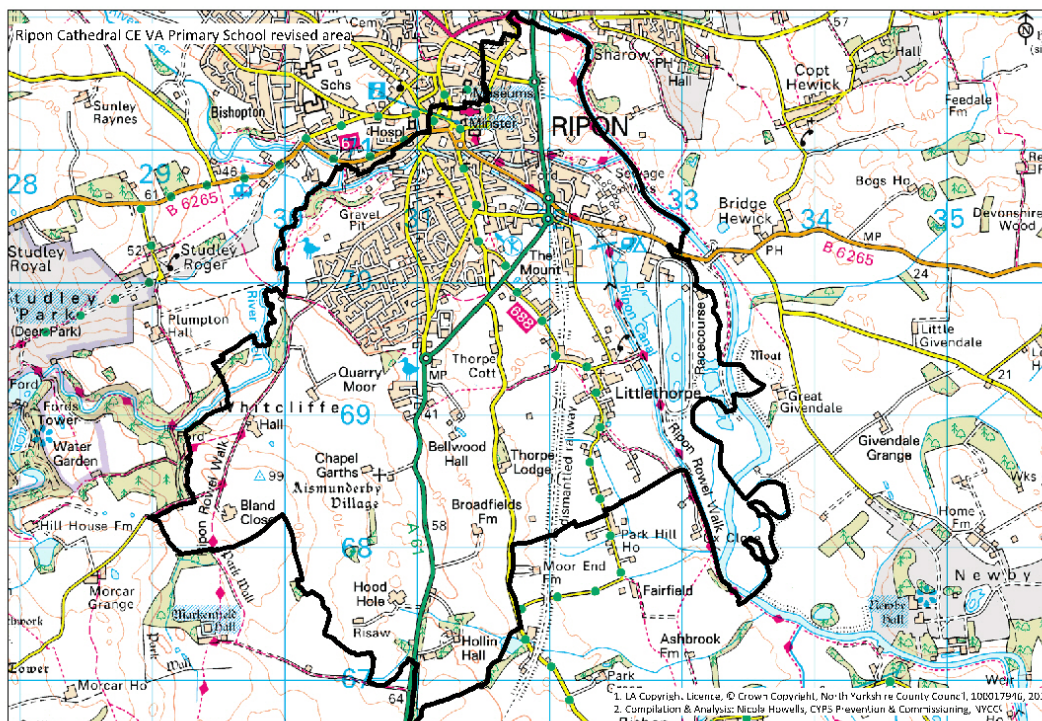
Proposed changes to catchment areas

**Holy Trinity Church of England Infant and Junior Schools, Ripon and Sharow
Church of England Primary School, Ripon**

North Yorkshire County Council is consulting on a proposal to change the catchment areas for Holy Trinity Church of England Infant and Junior Schools, Ripon and Sharow Church of England Primary School, Ripon. This consultation is part of the admission arrangements consultation for 2014/15 and will run from Wednesday 21 November 2012 to Thursday 17 January 2013. We would welcome your views on the proposal.

Why are we proposing a change?

This proposal has come about following a change in status of Ripon Cathedral CE Primary School in September 2011 from community school to voluntary aided school. The governing body, as admissions authority for Ripon Cathedral CE VA Primary School determined that with effect from September 2012 the school's catchment area would be revised in line with the wider ecclesiastical parish boundary of the Cathedral Church of St. Peter & St. Wilfrid Ripon. See map below.

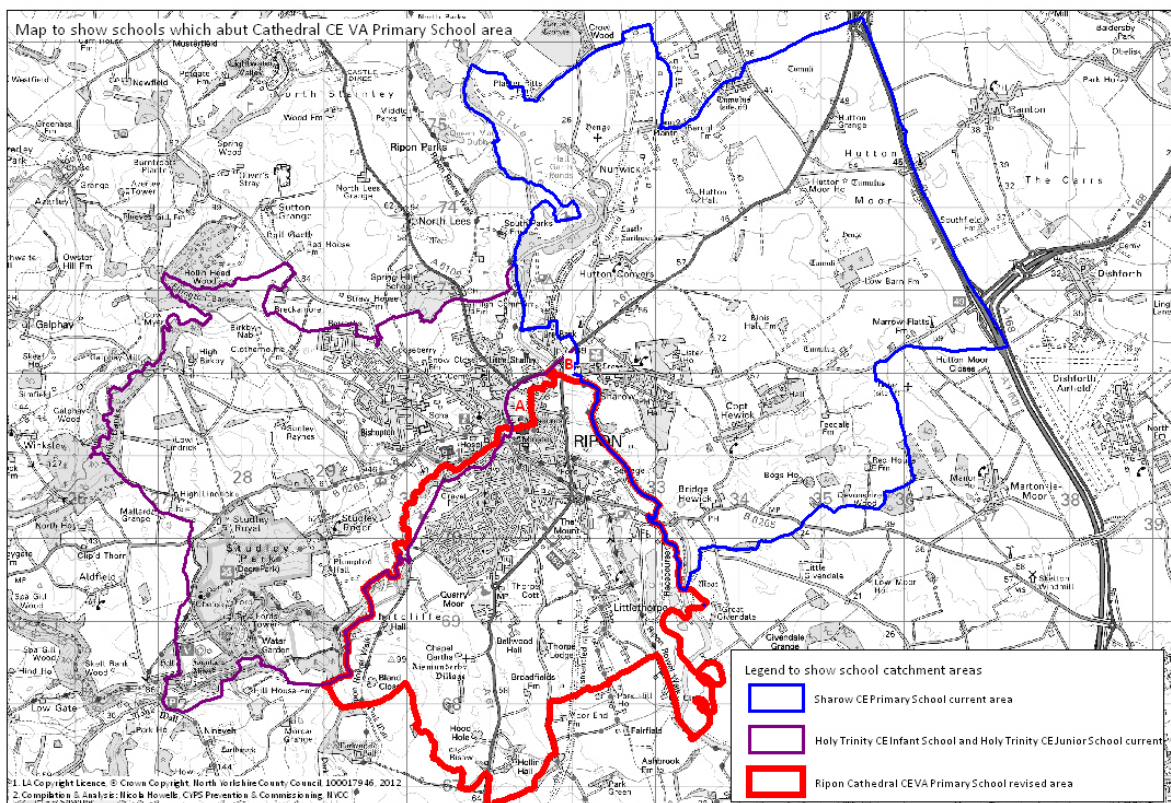


The revision to the catchment area of the school has created two small voids within the Ripon city area which would not be covered within the current catchment area of any other City school. In discussion with the headteacher of the school it has been agreed that for the September 2013 admission round Ripon Cathedral CE VA School will continue to regard children living within these two areas as being 'within catchment'. From September 2014 this will no longer be the case and therefore the local authority is consulting upon a proposed change to the catchment areas of Holy Trinity Infant and Junior Schools, Ripon and Sharow Church of England Primary School, Ripon. The purpose of the proposed change in catchment areas is to ensure that families affected by the change of catchment area for Ripon Cathedral CE VA School continue to have a designated local school which serves the area in which they live and is deemed to be their normal school.

Which school areas would be affected by the proposal?

The catchment areas for Holy Trinity Infant and Junior Schools, Ripon and Sharow Church of England Primary School, Ripon would be affected by the proposal.

The areas of the catchment in question are the areas shown on the maps below at A and B.



What happens next?

We would welcome your responses by the closing date of Tuesday 15th January 2013. Responses can be made on-line at <https://forms.northyorks.gov.uk/webforms/?TAG=Ripon> or by calling Nicola Howells on 01609 532258.

Consultation responses will then be considered by Executive Members with a final decision taken by the County Council in February 2013 as part of the normal annual admission arrangements process.

Consultation responses Ripon Holy Trinity CE Infant and Junior Schools and Sharow CE Primary School

	<i>I am a</i>	<i>at</i>	<i>Do you agree that A should be part of Holy Trinity CE catchment area</i>	<i>Reasons</i>	<i>Do you agree that B should be part of Sharow CE catchment area</i>	<i>Reasons</i>	<i>Other comments on NY admission arrangements</i>	<i>Reasons</i>
1	Parent, work at, Governor and live close to	Holy Trinity CE Infant or Junior	No	North Street acts as a natural boundary between the two catchment areas. It seems more appropriate that a catchment area should include those geographically closest to the school. The schools are currently over stretched in finding space for the children who already attend. It is difficult to imagine where extra children will be accommodated.	No	The river and by-pass should remain the boundary for the school. Changes would lead to more children being driven to school due to the major road that would need to be crossed.	No	
2	Parent	Holy Trinity CE Infant or Junior	Yes		Yes	Distance to Sharow CE Primary school		
3	Work at and Governor	Holy Trinity CE Infant or Junior	No	Holy Trinity Junior school already has large classes and the school building is no longer practical for the large numbers of children. Adding to the catchment area will add to this problem.	Yes	I'm not sure this is an area for discussion as it doesn't appear to have any houses on it.	Yes	consideration of the impact on current children in Holy Trinity catchment, the school building and funding must be thought through. The current set up couldn't cope with more children.
4	Parent	Holy Trinity CE Infant or Junior	No	Holy Trinity are already very popular schools in Ripon and student numbers and class sizes are high. This is compounded by the high mobility of the pupil cohort due to the number of forces families. Whilst the schools both manage this extremely well and facilitate additional classes where necessary, to include the potential of a significant number of additional children in the 2014-15 year poses an additional burden. The popularity and high standards of the Trinity Schools is likely to trigger a migration of families who now find themselves in the catchment area to move out of Ripon Cathedral VA School. The Infant school in particular has no further physical room for expansion. By increasing the catchment area my understanding is that the schools will			No	

				need to guarantee a place to any child within catchment who wishes to attend the school. Whilst allocation of places can be managed around the catchment area for new intakes, there will be a roll-out period for those year groups which are already established in both schools, and may find themselves needing to increase class sizes. Ripon Cathedral VA School has newly built premises which should be able to accommodate the catchment area they were designated. It seems unreasonable to me that other schools in older buildings should be expected to pick up numbers when they are already at what seems like full capacity.				
5	Parent	Holy Trinity CE Infant or Junior	No	You have stated 67 pupils of school age live in this area currently, of which a small number already attend Holy Trinity schools. You don't say how many attend Sharow or Cathedral schools. In my view Holy Trinity school is already oversubscribed, the class numbers in year 4 for example is 36 pupils per class. I don't think it is appropriate for a potential additional 67 pupils to be subscribed to an already oversubscribed school. Is extra funding going to be available to Holy Trinity to accommodate these pupils. There is a potential for further houses to be built in the area A, therefore adding further numbers of pupils to the school. I would like to know the proportion of pupils currently registered at Sharow school in comparison to Holy Trinity school.	Yes	This is not really very relevant as there is no housing in this area and no plans for houses in the future and so Sharow school will not be disadvantaged by taking on area B	Yes	If an additional number of pupils area going to be added to Holy Trinity schools I think there should be some additional funding provided to the schools to accommodate these pupils and to avoid this being to the detriment of pupils who have to deal with very large class numbers which limits the attention a teacher can provide to each child.
6	Governor	Holy Trinity CE Infant or Junior	Yes	Do not see where else it could fit!	Yes	Not many houses here! Maybe a few water voles.	Yes	You cannot continue to lump more & more children onto Holy Trinity Infant School without considering the knock on impact it has on Holy Trinity Junior School, although the infants can absorb the increased numbers the junior school will really struggle & childrens education will suffer.

County Council - Appendix 5H

NORTH YORKSHIRE COUNTY COUNCIL

CHILDREN AND YOUNG PEOPLE'S SERVICE

Consultation

21 November 2012 – 17 January 2013

Proposed changes to catchment areas

South Milford CP School and Athelstan CP School, Sherburn-in-Elmet

North Yorkshire County Council is consulting on a proposal to change the catchment areas for South Milford Community Primary School and Athelstan Community Primary School. This consultation is part of the admission arrangements consultation for 2014/15 and will run from 21 November 2012 to 17 January 2013. We would welcome your views on the proposal.

Why are we proposing a change?

The catchment area for South Milford Community Primary School is based upon the local civil parish boundary and has been in place for many years. This historic catchment area had not been raised as an issue prior to 2012 admissions as the school had previously been able to satisfy all applications. Following the allocation of school places in 2012 we received representation from local residents about perceived unfairness of the catchment area in that it did not encompass the full extent of the current village of South Milford. Concerns were raised by residents who live within what is locally considered to be the village of South Milford but outside the local civil parish boundary and therefore outside the established catchment area for South Milford Community Primary School.

The Schools Adjudicator reported on the matter earlier this year and found that it was reasonable to use parish boundaries as a basis for school catchment areas as they provide a straightforward starting point for determining boundaries. However he felt they could sometimes merit revision and adjustment from time to time. In the case of South Milford Community Primary School the Adjudicator commented that a re-examination of the boundary would be appropriate.

In the summer of this year we undertook an initial informal consultation with the governing bodies of South Milford Community Primary School and Athelstan Community Primary School and the respective Parish Councils. On 16 October 2012 all the feedback received, together with the general background information, was considered by the Executive Members for Schools and Children's Services who agreed that there should be a formal consultation with the wider communities.

Which school areas would be affected by the proposal?

Only the catchment areas for South Milford Community Primary School and Athelstan Community Primary School would be affected by the proposal.

The catchment area of South Milford Community Primary School abuts those for 4 other North Yorkshire primary schools namely Fairburn Community Primary School, Monk Fryston Church of England Voluntary Controlled Primary School, Hambleton Church of England Voluntary Controlled Primary School and Athelstan Community Primary School. The area of the catchment in question is to the north of South Milford Community Primary School in an area which currently forms part of the Athelstan Community Primary School catchment area and lying within the Sherburn-in-Elmet parish boundary. Much of the rest of the catchment area is undeveloped agricultural land and comfortably encompasses the South Milford village envelope.

It was therefore concluded that this proposal would only be concerned with the northern boundary of the South Milford Community Primary School catchment area and so would only directly affect South Milford Community Primary School and Athelstan Community Primary School.

What changes are proposed?

It is proposed that the northern boundary line of the South Milford Community Primary School catchment area be extended to encompass properties south of the railway line.

This would affect around 50 properties which lie south of the railway line, but within the Sherburn-in-Elmet civil parish boundary and therefore within the catchment area of Athelstan Community Primary School. This would mean that in future they would be part of the new catchment area for South Milford Community Primary School. Our records show that in January 2012 there were 4 primary school aged pupils living in the affected area, naturally this will vary over time.

Maps showing the current and proposed catchment areas are available on-line at <http://www.northyorks.gov.uk/index.aspx?articleid=2964> and are also included in the consultation response form.

Properties north of the railway line would remain within the catchment area for Athelstan Community Primary School.

We have used the railway line as the revised northern boundary as it physically demarcates the new area, avoids drawing an arbitrary line and would be unaffected by further housing development thereby future-proofing the proposed change.

What about the local plans for additional housing?

NYCC is aware that further new housing is proposed for both villages in coming years through the Selby District Council Core Strategy and that recently a large development within the Athelstan Community Primary School catchment area was approved.

We recognise the increasing demands on school capacity and that, regardless of catchment boundaries, expansion of accommodation at both South Milford Community Primary School and Athelstan Community Primary School would be required should significant housing plans become a reality.

When would any change become effective?

This review is part of the normal admission arrangements consultation which takes place annually. In line with the statutory requirements any approved changes would become effective for school admissions in September 2014.

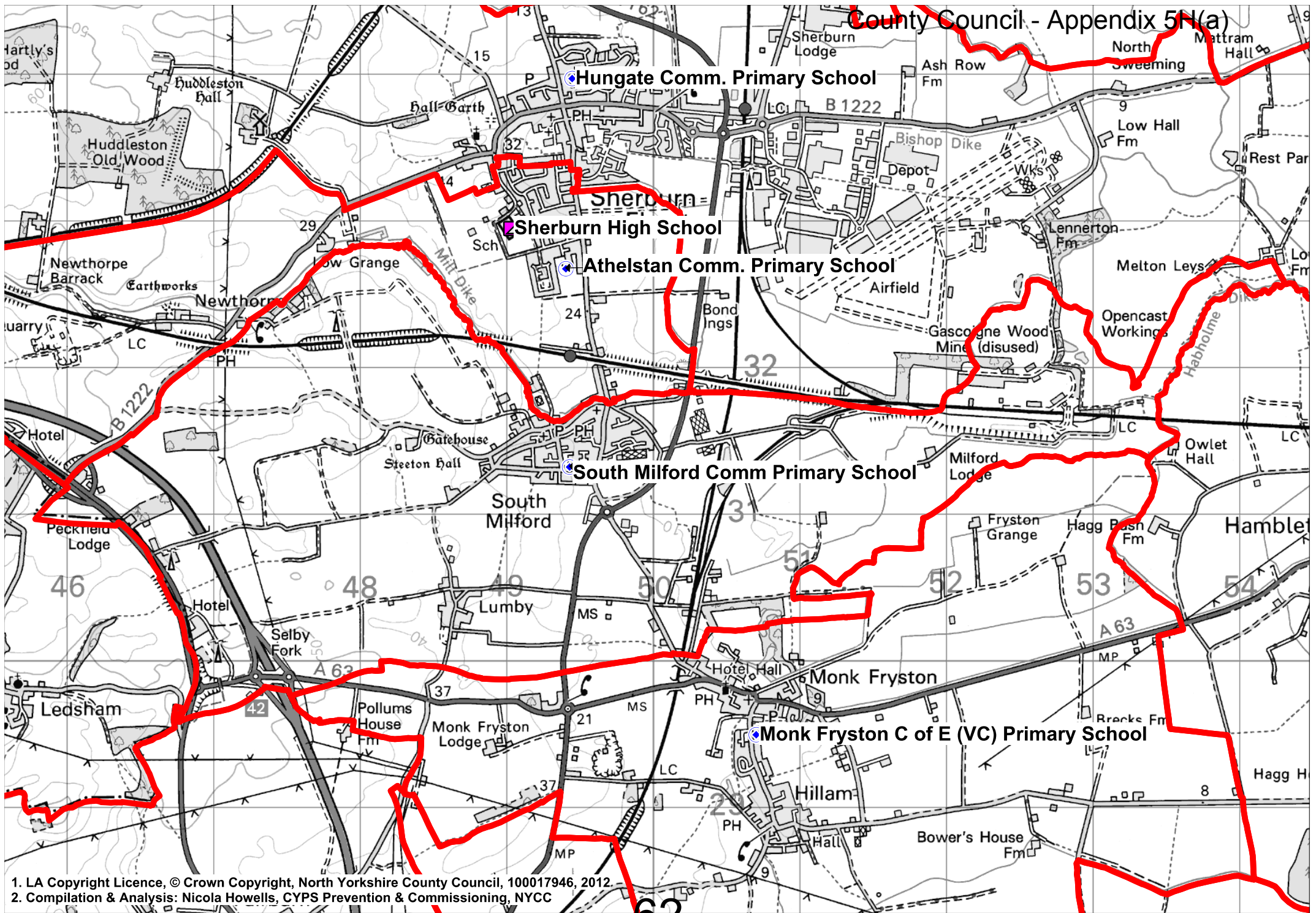
What happens next?

We would welcome your responses by the closing date of 5pm on 17 January 2013.

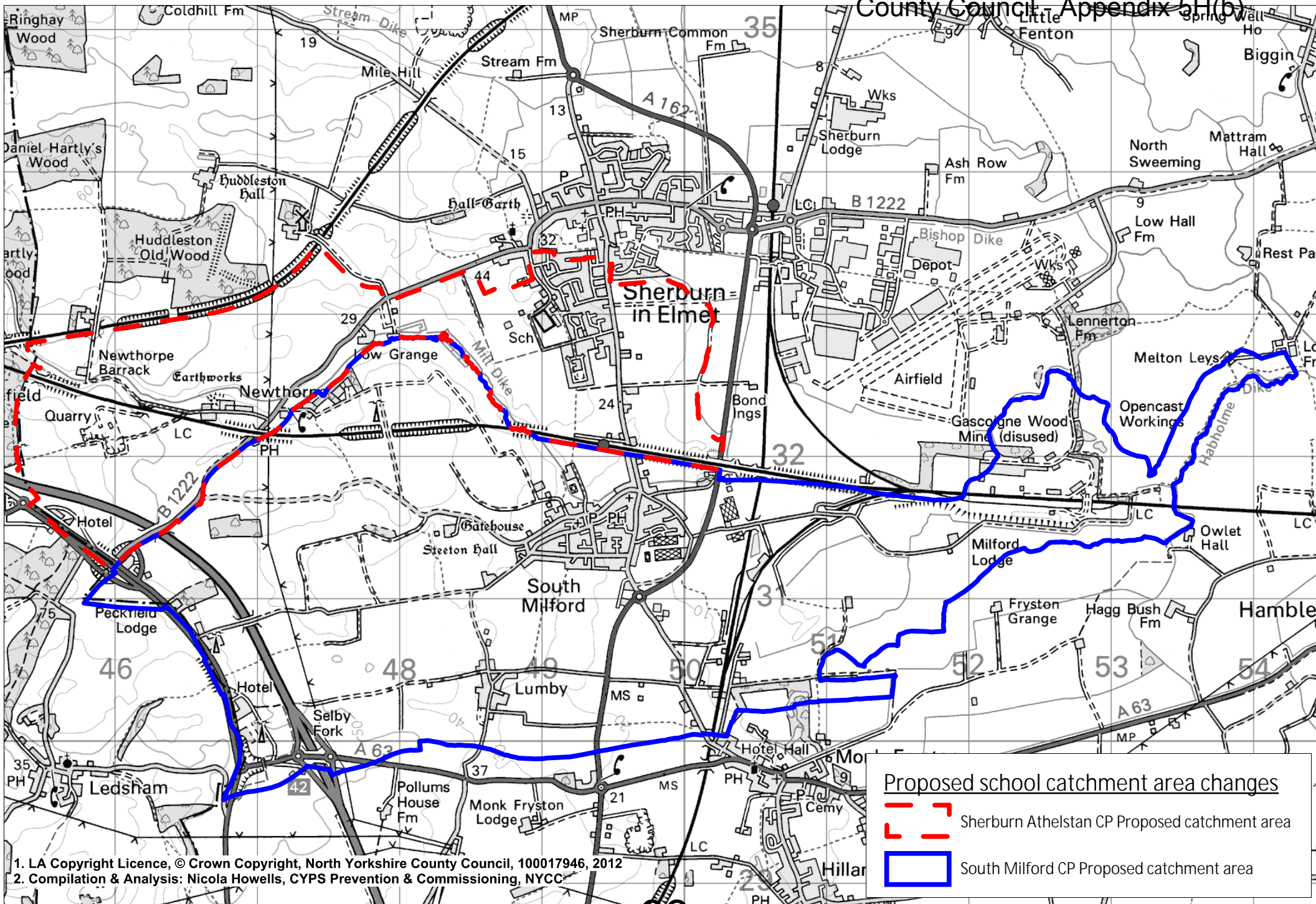
Responses can be made on-line at <https://forms.northyorks.gov.uk/webforms/?TAG=SMA>, by collecting a form from either school or by calling Nicola Howells on 01609 532258.

Consultation responses will then be considered by Executive Members with a final decision taken by the County Council in February 2013 as part of the normal annual admission arrangements process.

County Council - Appendix 5N(a)



1. LA Copyright Licence, © Crown Copyright, North Yorkshire County Council, 100017946, 2012.
2. Compilation & Analysis: Nicola Howells, CYPS Prevention & Commissioning, NYCC



1. LA Copyright Licence, © Crown Copyright, North Yorkshire County Council, 100017946, 2012
 2. Compilation & Analysis: Nicola Howells, CYPS Prevention & Commissioning, NYCC



Consultation responses South Milford CP/Sherburn Athelstan CP								
	<i>I am a</i>	<i>at</i>	<i>Catchment should remain as it is</i>	<i>Reasons</i>	<i>Do you think the catchment area should be changed to proposed area</i>	<i>Reasons</i>	<i>Other comments on NY admission arrangements</i>	<i>Reasons</i>
1	County Councillor		No	They do not align with the natural boundary, as people perceive, of the village. There is a significant number of households that appear to be in South Milford but, from a parish view point are in Sherburn in Elmet. People buying such a property would be making a wrong assumption from the children's educational viewpoint and the children would probably have to go to a school outside what they think is their village. Whilst the distance is not great they may well have friends who will end up going to a different school.	No	The majority of properties affected are actually north of the railway line!! I strongly urge someone to come and look at where the gap and fields start, you are gaining very little.	Yes	Just please look again at this. It needs to go to where the houses cease please or its a wasted effort!!
2	Parent/ Guardian	Athelstan CP	No	The catchment for SM primary school should include the whole of South Milford village.	Yes	To include South Milford post codes and these addresses are part of South Milford community.	Yes	I think some consideration should be given to children that have been sent to other schools due to the lack of forward planning that the school and NYCC have actually done to relieve this situation.
3	Governor	Another School	No		Yes	I support the news expressed by the residents living in the parish of South Milford.		
4	Headteacher	Another School	Yes		No		No	
5	Governor	South Milford CP School	No	South Milford Community Primary School (SMCPS) has been approached by a number of families who live within the village of South Milford but whose homes do not fall within the SMCPS catchment who feel strongly that their homes should be within the SMCPS catchment. SMCPS believes that there is strong community support for a change to the catchment areas. SMCPS is committed to supporting the needs of, and playing a part in, the local community and therefore also supports a change to the school catchment taking place.	Yes	The proposed arrangements are an improvement in that the majority of the physical village of South Milford will be included within the SMCPS catchment area. There are a number of properties to the immediate north of the railway line and we believe that the wishes of those residents should be considered as part of this process.	Yes	NYCC should consider the impact of any changes to catchment areas on families who may end up with siblings at different schools. Consideration to transitional arrangements should be given. At a meeting of current and prospective parents in November 2012 it was clear that many parties do not agree with the low weighting given to siblings out of catchment and I encourage NYCC to review their policy.

County Council - Appendix 5H(d)

Appendix 8d

6	County Councillor		No	It needs to move to better reflect where people live. Having spoken to officers I can see the logic of moving to the railway line rather than the open fields as I previously suggested. To the north of the railway line they will indeed be closer to Athelstan plus half are flats with no children present.	Yes	Better reflects the aspirations of parents	Yes	Please introduce asap as there are parents affected by any delay
7	Parish Council	South Milford	No	South Milford has expanded over a number of years outside of its historic parish boundary. Despite this, the village is still discrete with a green belt around the village separating it from neighbouring villages. This leads local residents, including those in the southern part of the Sherburn in Elmet parish, to more closely identify themselves with the local community in South Milford. South Milford Parish Council (SMPC) would like all children within the discrete village of South Milford to be offered the opportunity to attend South Milford Community Primary School (SMCPS). SMPC has been lobbied by a number of local residents to support a change to both the parish boundary and the school catchment and believes that there is strong community support for a change to the catchment areas.	Yes	SMPC believes the proposed school catchment is an improvement on the current arrangements. SMPC does note that a number of residences immediately beyond the railway line are excluded. SMPC has leafleted these residences and should there be a strong demand from those residences to be included within the catchment we would support that.	Yes	SMPC is concerned that the impact of boundary changes will have an adverse impact on children with siblings attending Athelstan, South Milford and Monk Fryston School. We understand that having siblings in school is not a high priority in the allocation of places but there now exists a situation where many children from South Milford parish are spread about three schools. We believe that these families should be given priority to enable families to be educated together as the logistics of getting primary school age children to different primary schools is particularly difficult, and families incur less transport, uniform and other costs where children attend the same school.
8	Parent	South Milford	No	The catchment area for South Milford Community Primary School excludes an area that is part of the village proper and therefore does not accurately reflect the community.	Yes	Moving the catchment border to the railway line would include houses that geographically, in terms of postcode and community belong to South Milford, so that the catchment area for the Community School would more accurately reflect the community.	Yes	I believe that the Admissions priorities should be changed to give siblings of children already in the school higher priority than children without siblings, regardless of whether those children live within or outside the normal area of the school.
9	Parent	South Milford	No	The parish/school boundaries do not reflect the boundaries of the village as it now stands. The families that are within the physical boundaries of the village are precluded from having their children in the village school	No	I am uncertain as to the boundaries in regard to Newthorpe. Are some children from this hamlet going to be allocated to SMCPS & some to Athelstan? If this is the case, aren't you simply replicating the issues that are currently in South Milford into Newthorpe?	Yes	I proposed, at the meeting held at SMCPS, that children who were affected by the boundary change should be managed more carefully in the years following the change. In the case of SMCPS, any children with older siblings that are currently in Athelstan but, following boundary change, will be in SMCPS catchment should

							have sibling as an equal weighting to 'living in catchment' for a defined period of time - say 5 years. So a child from Bridge Garth who has had to go to Athelstan could have their younger sibling attend the same school as the weighting of sibling is the same as in catchment. This would be for a fixed time period and could be relevant to any school boundary change across the NYCC region.
10	Live close to, my grandchildren attend, Ex County Councillor	South Milford	No	<p>The land between the Swan Public House and the Leeds/Selby railway line to the north is an integral part of South Milford village.</p> <p>The reason that this part of the village was designated part of the Admission Catchment Area for Athelstan CP School in 1974, when the last LA review was undertaken, was based purely on the inherited Parish Council Boundary areas. Whilst convenient it created no problem with children from this area of South Milford village gaining admission to the local school in South Milford until the 2012 intake. Some 38 years later.</p> <p>The essential point is that the members of the Community of South Milford who live in this part of the village are an integral part of the South Milford village Community.</p> <p>These members of our Community participate in the all village activities such as the school fairs, carols in the park at Christmas, picnic in the park, attend the village church, use the local medical practice, the pre-school children attend the local pre-school in the village – actually they visit the local school as a pre-cursor to them beginning their school life there. The list goes on but essentially they are an integral part of the Community of South Milford.</p> <p>The members of the South Milford Community who live in this part of the village have no synergy with the</p>		<p>The proposal to change the admissions catchment boundary for South Milford CP school, as outlined above, makes eminent sense because it incorporates the families of South Milford village who live in the area to the north of the village between the Swan Public House and the Leeds/Selby railway line.</p> <p>These members of our Community are an integral part of the life of South Milford participating in the range of the village's social activities and accessing the range of services afforded within the Community. e.g the medical practice, local shops, pre-school group, mums and tots group, Caterpillar club, Rainbows, Brownies, children ballet classes, adult & junior cricket and football clubs, picnic in the park, carols in the park, using of the recreational park in the village etc.</p> <p>I have lived in South Milford since 1976 and have served on the Parish Council for 22 years, Selby District Council for 4 years, NYCC for 8 years and a governor, including the Chair for 8 years, at South Milford CP School for 16 years. Over the whole of this period it has always be a given that South Milford CP School was the local school for all of the children who lived in the village of</p>	<p>On the assumption that the proposed change to the admission catchment area for South Milford CP school is agreed it is important that the children of families who currently live in the area of the village between the Swan Public House and the Leeds/Selby railway line all qualify for the admission to the school in 2013/14 if that is the wish of their parents/guardians.</p> <p>Cognisance needs to be given to these families who may find themselves in the unenviable position of having children at one school but whose siblings qualify for admission at another through no fault of their own.</p>

				Community of Sherburn-in-Elmet. The most fundamental point is that South Milford CP school is the local school for the children who live in this part of our village.		South Milford, Lumby and Milford Junction. This appeared to be evidenced by the fact that, until the intake for September 2012, all of the children, who lived in the area between the Swan Public House and the Leeds/Selby railway line, whose parents wished for them to do so, attended South Milford CP School. The Parish boundary upon which the admissions catchment boundary for South Milford CP school is based makes no sense for it unnecessarily divides the village. The essential point being that South Milford CP school is, and as far as the Community is concerned, has always been the local school for all of the children of South Milford Village. Hence the proposed school admissions catchment boundary change for South Milford CP school will simply confirm what the Community has always believed to be the situation.		
11	Parent	South Milford	No	The parish/school boundaries do not reflect the boundaries of the village as it now stands. The families that are within the physical boundaries of the village are precluded from having their children in the village school	No	I am uncertain as to the boundaries in regard to Newthorpe. Are some children from this hamlet going to be allocated to SMCPs & some to Athelstan? If this is the case, aren't you simply replicating the issues that are currently in South Milford into Newthorpe?	Yes	I proposed, at the meeting held at SMCPs, that children who were affected by the boundary change should be managed more carefully in the years following the change. In the case of SMCPs, any child with older siblings that are currently in Athelstan but, following boundary change, will be in SMCPs catchment should have sibling as an equal weighting to 'living in catchment' for a defined period of time - say 5 years. So a child from Bridge Garth who has had to go to Athelstan could have their younger sibling attend the same school as the weighting of sibling is the same as in catchment. This would be for a fixed time period and could be

				into the catchment area for Athelstan School, in Sherburn-in-Elmet. The boundary should be moved to at least the railway line, which is where the village signpost marking the entry into Sherburn-in-Elmet is located.				
13	Resident	Bridge Garth		I support the catchment change to include the whole of South Milford village.				
14	Work at (Headteacher)	South Milford CP	No	Governors and staff at South Milford CP School feel the catchment area should change to include residencies between the current boundary and the railway line (North from Low Street) since the railway line seems to be a good edge to the village. However, we feel there is a further anomaly which would also make sense to alter at the same time and that is around Newthorpe. We feel it would make sense again to use the railway line as the boundary for Athelstan School.	Yes	Governors and staff at South Milford CP School feel the catchment area should change to include residencies between the current boundary and the railway line (North from Low Street) since the railway line seems to be a good edge to the village. However, we feel there is a further anomaly which would also make sense to alter at the same time and that is around Newthorpe. We feel it would make sense again to use the railway line as the boundary for Athelstan School.	Yes	If the boundary changes, Governors and Staff at South Milford CP School would want consideration to be given to families who are in the 'changed' area for sibling applications. Some families may in the past have been allocated Athelstan School, but their sibling may then be offered South Milford and vice versa.
15	Governor	Athelstan CP	Yes	Both Sherburn and Milford are experiencing unpredicted growth this proposed change is a knee jerk reaction to a minority concern which has no been resolved. I suggest that there might have been a better use of resource (time, cash, emotion) to wait until the proposed expansion of Athelstan is approved and building/capacity is finalised. I envisage there being a time when those in South Milford perhaps been allocated Athelstan due to South Milford's capacity.	No	As per reasons overleaf, I do believe that a better management of class sizes in south Milford would have avoided this waste of valuable resource.	Yes	To further reiterate that this is in my opinion a waste of valuable resource as it will need to be looked at again in the next 5 years, the tail wagging the dog' springs to mind.
16	Work at (Headteacher)	Athelstan CP	Yes	Although I recognise that the birth rate is rising nationally and primary schools are now faced with the situation of being full and over subscribed. The Sherburn/South Milford area has an additional factor in that there is current building work going on which has not yet fully impacted on primary schools and there is planning for a large amount of new housing to be built. I do think that IN THE FUTURE the boundaries should be looked at (and not just Athelstan/South Milford but	No	I do not think that new boundaries can be drawn up fairly when you are only looking at one schools needs and current problems and not taking into account the development now and future in Sherburn in Elmet. This does not take into account the bigger picture. You are addressing just one schools current issues, which is very short sighted.	No	

Consultation responses Admission Arrangements Consultation								
	I am a	I am/not in agreement with the proposed admission policy for 2014/15 for C & VC Schools	Reasons	I am/not in agreement with the proposed nursery policy for 2014/15 for C & VC Schools	Reasons	I am/not in agreement with the NY coordinated admission arrangements & application forms	Reasons	Any other comments
1	Headteacher	I am		I am		I am		
2	Headteacher	I am		I am				
3	Parent	I am not	I would only agree to admissions arrangements for future academic years if the catchment area of South Milford CP School included all of South Milford village. Furthermore, an increase to the reduced PAN of 30 in line with the increased housing development in the village needs to be undertaken in order for me to agree with any admissions arrangements.	I am				
4	Headteacher	I am		I am		I am		
5	Headteacher	I am		I am				
6	Headteacher	I am				I am		
7	Headteacher	I am		I am		I am		
8	Parent	I am not	I believe that the priority groups should be changed as follows: Priority group 3 should be children with a sibling already in the school; Priority group 4 should be children without a sibling already in the school. In both groupings the tie-breaker should be distance from the school.	I am		I am		I agree with the proposed change to the catchment areas of South Milford Community Primary School and Athelstan School.
9	Headteacher	I am not	The current infrastructure at Holy Trinity Juniors and the historic underfunding of junior schools mean that class sizes could potentially rise again and therefore directly influence standards.					All traffic and people movement issues need to be considered. The schools' capacity to cope with further increases to pupil numbers needs to be factored in.

10	Headteacher	I am not		I am not	I would like our school to be able to admit 3 year olds. There are a number of children in the village who are unable to access education at 3 because of the remoteness of the catchment area and no public transport. These children then find it increasingly difficult to catch up to age related expectations eg: 2012 only 40% working at L4+. Starting school at 4 is disadvantaging the children and they cannot get to Weaverthorpe School.			
11	Headteacher	I am		I am not	You have kept our nursery places at 26, but increased our admissions to 75 - that does not work. We need to have a 39 FTE for nursery to be able to admit them into the school in Reception.			
12	Headteacher	I am		I am		I am		
13	Headteacher	I am						